

## Anti-ARHGEF10 antibody (339-388 aa) (STJ91686)

STJ91686

### GENERAL INFORMATION

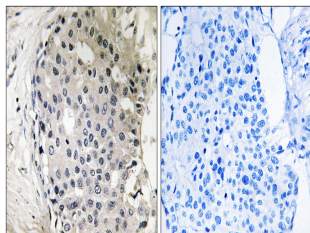
<b>Product Type</b>	Primary antibodies
<b>Short Description</b>	Rabbit polyclonal antibody anti-Rho guanine nucleotide exchange factor 10 (339-388 aa) is suitable for use in Western Blot, Immunohistochemistry, Immunofluorescence and ELISA research applications.
<b>Applications</b>	WB/IHC/IF/ELISA
<b>Host/Source</b>	Rabbit
<b>Reactivity</b>	Human/Monkey

### PRODUCT PROPERTIES

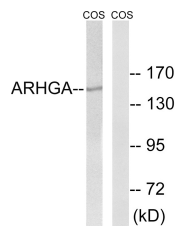
<b>Clonality</b>	Polyclonal
<b>Clone ID</b>	
<b>Concentration</b>	1 mg/mL
<b>Conjugation</b>	Unconjugated
<b>Purification</b>	The antibody was affinity-purified from rabbit antiserum by affinity-chromatography using epitope-specific immunogen.
<b>Dilution</b>	WB 1:500-1:2000
<b>Range</b>	IHC 1:100-1:300 ELISA 1:20000 IF 1:50-200
<b>Formulation</b>	Liquid in PBS containing 50% Glycerol, 0.5% BSA and 0.02% Sodium Azide.
<b>Isotype</b>	IgG
<b>Storage Instruction</b>	Store at -20°C for up to 1 year from the date of receipt, and avoid repeat freeze-thaw cycles.

### TARGET INFORMATION

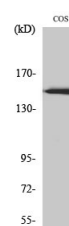
<b>Gene ID</b>	9639
<b>Gene Symbol</b>	ARHGEF10
<b>Uniprot ID</b>	ARHGA_HUMAN
<b>Immunogen</b>	The antiserum was produced against synthesized peptide derived from the human ARHGEF10 at the amino acid range 339-388
<b>Immunogen Region</b>	339-388 aa
<b>Specificity</b>	ARHGEF10 Polyclonal Antibody detects endogenous levels of ARHGEF10 protein.
<b>Immunogen Sequence</b>	



Immunohistochemistry analysis of paraffin-embedded human breast carcinoma tissue, using ARHGEF10 Antibody. The picture on the right is blocked with the synthesized peptide.



Western blot analysis of lysates from COS7 cells, using ARHGEF10 Antibody. The lane on the right is blocked with the synthesized peptide.



Western blot analysis of various cells using ARHGEF10 Polyclonal Antibody