

Anti-ARHGAP11A antibody (471-520 aa) (STJ91679)

STJ91679

GENERAL INFORMATION

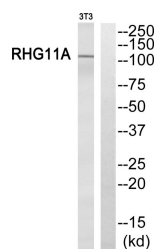
Product Type	Primary antibodies
Short Description	Rabbit polyclonal antibody anti-Rho GTPase-activating protein 11A (471-520 aa) is suitable for use in Western Blot and ELISA research applications.
Applications	WB/ELISA
Host/Source	Rabbit
Reactivity	Human/Rat/Mouse

PRODUCT PROPERTIES

Clonality	Polyclonal
Clone ID	
Concentration	1 mg/mL
Conjugation	Unconjugated
Purification	The antibody was affinity-purified from rabbit antiserum by affinity-chromatography using epitope-specific immunogen.
Dilution Range	WB 1:500-1:2000 ELISA 1:40000
Formulation	Liquid in PBS containing 50% Glycerol, 0.5% BSA and 0.02% Sodium Azide.
Isotype	IgG
Storage	Store at -20°C for up to 1 year from the date of receipt, and avoid repeat freeze-thaw cycles.
Instruction	

TARGET INFORMATION

Gene ID	9824
Gene Symbol	ARHGAP11A
Uniprot ID	RHGBA_HUMAN
Immunogen	The antiserum was produced against synthesized peptide derived from the human ARHGAP11A at the amino acid range 471-520
Immunogen Region	471-520 aa
Specificity	ARHGAP11A Polyclonal Antibody detects endogenous levels of ARHGAP11A protein.
Immunogen Sequence	



Western blot analysis of ARHGAP11A Antibody. The lane on the right is blocked with the ARHGAP11A peptide.

This product is suitable for in-vitro studies under the RESEARCH USE ONLY [RUO] licence. This product must not be used as for diagnostic or other medical purposes.
St John's Laboratory Ltd, Knowledge Dock Business Centre, University Way, London, E16 2RD | Tel: 0208 223 3081