

Anti-SLC25A12 antibody (391-440 aa) (STJ91670)

STJ91670

GENERAL INFORMATION

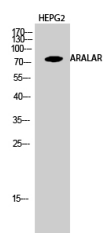
Product Type	Primary antibodies
Short Description	Rabbit polyclonal antibody anti-Electrogenic aspartate/glutamate antiporter SLC25A12, mitochondrial (391-440 aa) is suitable for use in Western Blot, Immunohistochemistry, Immunofluorescence and ELISA research applications.
Applications	WB/IHC/IF/ELISA
Host/Source	Rabbit
Reactivity	Human/Rat/Mouse

PRODUCT PROPERTIES

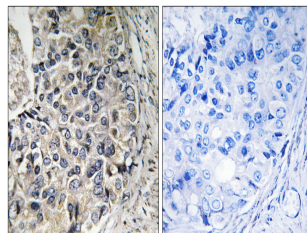
Clonality	Polyclonal
Clone ID	
Concentration	1 mg/mL
Conjugation	Unconjugated
Purification	The antibody was affinity-purified from rabbit antiserum by affinity-chromatography using epitope-specific immunogen.
Dilution Range	WB 1:500-1:2000 IHC 1:100-1:300 ELISA 1:20000 IF 1:50-200
Formulation	Liquid in PBS containing 50% Glycerol, 0.5% BSA and 0.02% Sodium Azide.
Isotype	IgG
Storage Instruction	Store at -20°C for up to 1 year from the date of receipt, and avoid repeat freeze-thaw cycles.

TARGET INFORMATION

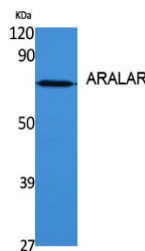
Gene ID	8604
Gene Symbol	SLC25A12
Uniprot ID	S2512_HUMAN
Immunogen	The antiserum was produced against synthesized peptide derived from the human CMC1 at the amino acid range 391-440
Immunogen Region	391-440 aa
Specificity	ARALAR Polyclonal Antibody detects endogenous levels of ARALAR protein.
Immunogen Sequence	



Western blot analysis of HEPG2 cells using ARALAR Polyclonal Antibody diluted at 1:1000



Immunohistochemistry analysis of paraffin-embedded human prostate carcinoma tissue, using CMC1 Antibody. The picture on the right is blocked with the synthesized peptide.



Western blot analysis of various cells using ARALAR Polyclonal Antibody diluted at 1:1000