

Anti-ARAF antibody (276-325 aa) (STJ91668)

STJ91668

GENERAL INFORMATION

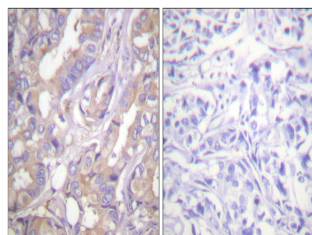
Product Type	Primary antibodies
Short Description	Rabbit polyclonal antibody anti-Serine/threonine-protein kinase A-Raf (276-325 aa) is suitable for use in Western Blot, Immunohistochemistry, Immunofluorescence and ELISA research applications.
Applications	WB/IHC/IF/ELISA
Host/Source	Rabbit
Reactivity	Human/Mouse/Rat

PRODUCT PROPERTIES

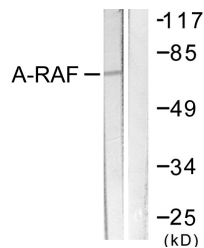
Clonality	Polyclonal
Clone ID	
Concentration	1 mg/mL
Conjugation	Unconjugated
Purification	The antibody was affinity-purified from rabbit antiserum by affinity-chromatography using epitope-specific immunogen.
Dilution	WB 1:500-1:2000
Range	IHC 1:100-1:300 ELISA 1:20000 IF 1:50-200
Formulation	Liquid in PBS containing 50% Glycerol, 0.5% BSA and 0.02% Sodium Azide.
Isotype	IgG
Storage	Store at -20°C for up to 1 year from the date of receipt, and avoid repeat freeze-thaw cycles.
Instruction	

TARGET INFORMATION

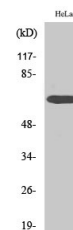
Gene ID	369
Gene Symbol	ARAF
Uniprot ID	ARAF_HUMAN
Immunogen	The antiserum was produced against synthesized peptide derived from the human A-RAF at the amino acid range 276-325
Immunogen	276-325 aa
Region	
Specificity	A-Raf Polyclonal Antibody detects endogenous levels of A-Raf protein.
Immunogen	
Sequence	



Immunohistochemistry analysis of paraffin-embedded human breast carcinoma tissue, using A-RAF Antibody. The picture on the right is blocked with the synthesized peptide.



Western blot analysis of lysates from HeLa cells, treated with PMA 125ng/ml 30', using A-RAF Antibody. The lane on the right is blocked with the synthesized peptide.



Western blot analysis of various cells using A-Raf Polyclonal Antibody