

Anti-ADRA2C antibody (336-385 aa) (STJ91665)

STJ91665

GENERAL INFORMATION

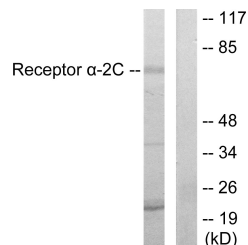
Product Type	Primary antibodies
Short Description	Rabbit polyclonal antibody anti-Alpha-2C adrenergic receptor (336-385 aa) is suitable for use in Western Blot, Immunohistochemistry, Immunofluorescence and ELISA research applications.
Applications	WB/IHC/IF/ELISA
Host/Source	Rabbit
Reactivity	Human/Mouse/Rat

PRODUCT PROPERTIES

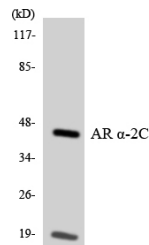
Clonality	Polyclonal
Clone ID	
Concentration	1 mg/mL
Conjugation	Unconjugated
Purification	The antibody was affinity-purified from rabbit antiserum by affinity-chromatography using epitope-specific immunogen.
Dilution Range	WB 1:500-1:2000 IHC 1:100-1:300 IF 1:200-1:1000 ELISA 1:10000
Formulation	Liquid in PBS containing 50% Glycerol, 0.5% BSA and 0.02% Sodium Azide.
Isotype	IgG
Storage Instruction	Store at -20°C for up to 1 year from the date of receipt, and avoid repeat freeze-thaw cycles.

TARGET INFORMATION

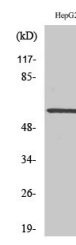
Gene ID	152
Gene Symbol	ADRA2C
Uniprot ID	ADA2C_HUMAN
Immunogen	The antiserum was produced against synthesized peptide derived from the human Adrenergic Receptor alpha-2C at the amino acid range 336-385
Immunogen Region	336-385 aa
Specificity	AR Alpha 2C Polyclonal Antibody detects endogenous levels of AR Alpha 2C protein.
Immunogen Sequence	



Western blot analysis of lysates from HepG2 cells, using Adrenergic Receptor alpha-2C Antibody. The lane on the right is blocked with the synthesized peptide.



Western blot analysis of the lysates from HeLa cells using Adrenergic Receptor Alpha-2C antibody.



Western blot analysis of various cells using AR Alpha 2C Polyclonal Antibody.

This product is suitable for in-vitro studies under the RESEARCH USE ONLY [RUO] licence. This product must not be used as for diagnostic or other medical purposes.
St John's Laboratory Ltd, Knowledge Dock Business Centre, University Way, London, E16 2RD | Tel: 0208 223 3081