

Anti-ADRA2B antibody (161-210 aa) (STJ91664)

STJ91664

GENERAL INFORMATION

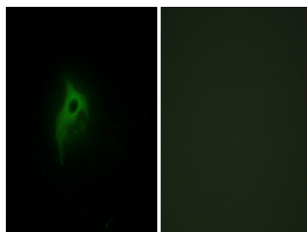
Product Type	Primary antibodies
Short Description	Rabbit polyclonal antibody anti-Alpha-2B adrenergic receptor (161-210 aa) is suitable for use in Immunofluorescence and ELISA research applications.
Applications	IF/ELISA
Host/Source	Rabbit
Reactivity	Human/Rat/Mouse

PRODUCT PROPERTIES

Clonality	Polyclonal
Clone ID	
Concentration	1 mg/mL
Conjugation	Unconjugated
Purification	The antibody was affinity-purified from rabbit antiserum by affinity-chromatography using epitope-specific immunogen.
Dilution Range	IF 1:200-1:1000 ELISA 1:10000
Formulation	Liquid in PBS containing 50% Glycerol, 0.5% BSA and 0.02% Sodium Azide.
Isotype	IgG
Storage	Store at -20°C for up to 1 year from the date of receipt, and avoid repeat freeze-thaw cycles.
Instruction	

TARGET INFORMATION

Gene ID	151
Gene Symbol	ADRA2B
Uniprot ID	ADA2B_HUMAN
Immunogen	The antiserum was produced against synthesized peptide derived from the human Adrenergic Receptor alpha-2B at the amino acid range 161-210
Immunogen Region	161-210 aa
Specificity	AR Alpha 2B Polyclonal Antibody detects endogenous levels of AR Alpha 2B protein.
Immunogen Sequence	



Immunofluorescence analysis of HepG2 cells, using Adrenergic Receptor alpha-2B Antibody. The picture on the right is blocked with the synthesized peptide.

This product is suitable for in-vitro studies under the RESEARCH USE ONLY [RUO] licence. This product must not be used as for diagnostic or other medical purposes.
St John's Laboratory Ltd, Knowledge Dock Business Centre, University Way, London, E16 2RD | Tel: 0208 223 3081