

## Anti-AR antibody (621-670 aa) (STJ91659)

STJ91659

### GENERAL INFORMATION

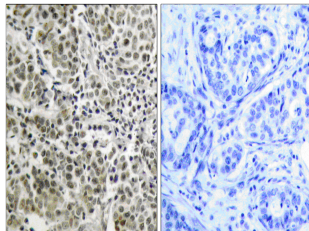
<b>Product Type</b>	Primary antibodies
<b>Short Description</b>	Rabbit polyclonal antibody anti-Androgen receptor (621-670 aa) is suitable for use in Western Blot, Immunohistochemistry, Immunofluorescence and ELISA research applications.
<b>Applications</b>	WB/IHC/IF/ELISA
<b>Host/Source</b>	Rabbit
<b>Reactivity</b>	Human/Rat/Mouse

### PRODUCT PROPERTIES

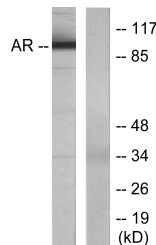
<b>Clonality</b>	Polyclonal
<b>Clone ID</b>	
<b>Concentration</b>	1 mg/mL
<b>Conjugation</b>	Unconjugated
<b>Purification</b>	The antibody was affinity-purified from rabbit antiserum by affinity-chromatography using epitope-specific immunogen.
<b>Dilution Range</b>	WB 1:500-1:2000 IHC 1:100-1:300 ELISA 1:40000 IF 1:50-200
<b>Formulation</b>	Liquid in PBS containing 50% Glycerol, 0.5% BSA and 0.02% Sodium Azide.
<b>Isotype</b>	IgG
<b>Storage Instruction</b>	Store at -20°C for up to 1 year from the date of receipt, and avoid repeat freeze-thaw cycles.

### TARGET INFORMATION

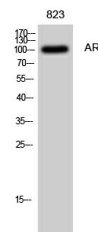
<b>Gene ID</b>	367
<b>Gene Symbol</b>	AR
<b>Uniprot ID</b>	ANDR_HUMAN
<b>Immunogen</b>	The antiserum was produced against synthesized peptide derived from the human c-terminal Androgen Receptor at the amino acid range 621-670
<b>Immunogen Region</b>	621-670 aa
<b>Specificity</b>	AR Polyclonal Antibody detects endogenous levels of AR protein.
<b>Immunogen Sequence</b>	



Immunohistochemistry analysis of paraffin-embedded human prostate carcinoma tissue, using Androgen Receptor Antibody. The picture on the right is blocked with the synthesized peptide.



Western blot analysis of lysates from LOVO cells, using Androgen Receptor Antibody. The lane on the right is blocked with the synthesized peptide.



Western blot analysis of 823 cells using AR Polyclonal Antibody diluted at 1:1/4 500