

Anti-AQP2 antibody (222-271 aa) (STJ91655)

STJ91655

GENERAL INFORMATION

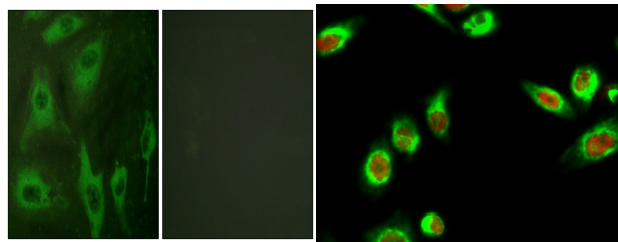
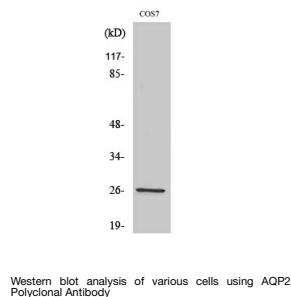
Product Type	Primary antibodies
Short Description	Rabbit polyclonal antibody anti-Aquaporin-2 (222-271 aa) is suitable for use in Western Blot, Immunohistochemistry, Immunofluorescence and ELISA research applications.
Applications	WB/IHC/IF/ELISA
Host/Source	Rabbit
Reactivity	Human/Mouse/Rat/Monkey/Dog

PRODUCT PROPERTIES

Clonality	Polyclonal
Clone ID	
Concentration	1 mg/mL
Conjugation	Unconjugated
Purification	The antibody was affinity-purified from rabbit antiserum by affinity-chromatography using epitope-specific immunogen.
Dilution Range	WB 1:500-1:2000 IHC 1:100-1:300 IF 1:200-1:1000 ELISA 1:10000
Formulation	Liquid in PBS containing 50% Glycerol, 0.5% BSA and 0.02% Sodium Azide.
Isotype	IgG
Storage Instruction	Store at -20°C for up to 1 year from the date of receipt, and avoid repeat freeze-thaw cycles.

TARGET INFORMATION

Gene ID	359
Gene Symbol	AQP2
Uniprot ID	AQP2_HUMAN
Immunogen	The antiserum was produced against synthesized peptide derived from the human Aquaporin 2 at the amino acid range 222-271
Immunogen Region	222-271 aa
Specificity	AQP2 Polyclonal Antibody detects endogenous levels of AQP2 protein.
Immunogen Sequence	



Immunofluorescence analysis of HeLa cells, using Aquaporin 2 Antibody. The picture on the right is blocked with the synthesized peptide.

Immunofluorescence analysis of HeLa cell. 1. AQP2 Polyclonal Antibody (green) was diluted at 1:200 (4A°C overnight). (red) was diluted at 1:200 (4A°C overnight). 2. Goat Anti Rabbit Alexa Fluor 488 Catalog: (NA was diluted at 1:1000 (room temperature, 50min). Goat Anti Mouse Alexa Fluor 594 Catalog: (NA was diluted at 1:1000 (room temperature, 50min).