

Anti-APOL4 antibody (301-350 aa) (STJ91645)

STJ91645

GENERAL INFORMATION

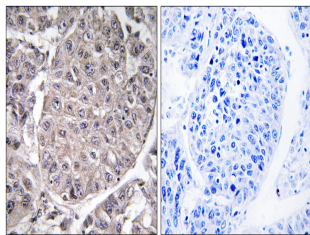
Product Type	Primary antibodies
Short Description	Rabbit polyclonal antibody anti-Apolipoprotein L4 (301-350 aa) is suitable for use in Western Blot, Immunohistochemistry, Immunofluorescence and ELISA research applications.
Applications	WB/IHC/IF/ELISA
Host/Source	Rabbit
Reactivity	Human/Rat/Mouse

PRODUCT PROPERTIES

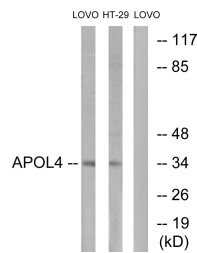
Clonality	Polyclonal
Clone ID	
Concentration	1 mg/mL
Conjugation	Unconjugated
Purification	The antibody was affinity-purified from rabbit antiserum by affinity-chromatography using epitope-specific immunogen.
Dilution Range	WB 1:500-1:2000 IHC 1:100-1:300 IF 1:200-1:1000 ELISA 1:20000
Formulation	Liquid in PBS containing 50% Glycerol, 0.5% BSA and 0.02% Sodium Azide.
Isotype	IgG
Storage Instruction	Store at -20°C for up to 1 year from the date of receipt, and avoid repeat freeze-thaw cycles.

TARGET INFORMATION

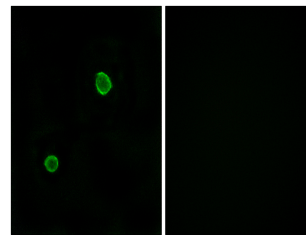
Gene ID	80832
Gene Symbol	APOL4
Uniprot ID	APOL4_HUMAN
Immunogen	The antiserum was produced against synthesized peptide derived from the human APOL4 at the amino acid range 301-350
Immunogen Region	301-350 aa
Specificity	ApoL4 Polyclonal Antibody detects endogenous levels of ApoL4 protein.
Immunogen Sequence	



Immunohistochemistry analysis of paraffin-embedded human liver carcinoma tissue, using APOL4 Antibody. The picture on the right is blocked with the synthesized peptide.



Western blot analysis of lysates from LOVO and HT-29 cells, using APOL4 Antibody. The lane on the right is blocked with the synthesized peptide.



Immunofluorescence analysis of MCF7 cells, using APOL4 Antibody. The picture on the right is blocked with the synthesized peptide.