

Anti-LRP8 antibody (451-500 aa) (STJ91640)

STJ91640

GENERAL INFORMATION

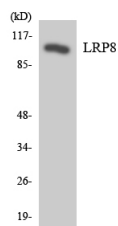
Product Type	Primary antibodies
Short Description	Rabbit polyclonal antibody anti-Low-density lipoprotein receptor-related protein 8 (451-500 aa) is suitable for use in Western Blot and ELISA research applications.
Applications	WB/ELISA
Host/Source	Rabbit
Reactivity	Human/Rat/Mouse

PRODUCT PROPERTIES

Clonality	Polyclonal
Clone ID	
Concentration	1 mg/mL
Conjugation	Unconjugated
Purification	The antibody was affinity-purified from rabbit antiserum by affinity-chromatography using epitope-specific immunogen.
Dilution Range	WB 1:500-1:2000 ELISA 1:40000
Formulation	Liquid in PBS containing 50% Glycerol, 0.5% BSA and 0.02% Sodium Azide.
Isotype	IgG
Storage	Store at -20°C for up to 1 year from the date of receipt, and avoid repeat freeze-thaw cycles.
Instruction	

TARGET INFORMATION

Gene ID	7804
Gene Symbol	LRP8
Uniprot ID	LRP8_HUMAN
Immunogen	The antiserum was produced against synthesized peptide derived from the human LRP8 at the amino acid range 451-500
Immunogen Region	451-500 aa
Specificity	ApoER2 Polyclonal Antibody detects endogenous levels of ApoER2 protein.
Immunogen Sequence	



Western blot analysis of the lysates from HeLa cells using LRP8 antibody.

This product is suitable for in-vitro studies under the RESEARCH USE ONLY [RUO] licence. This product must not be used as for diagnostic or other medical purposes.
St John's Laboratory Ltd, Knowledge Dock Business Centre, University Way, London, E16 2RD | Tel: 0208 223 3081