

Anti-APLF antibody (82-131 aa) (STJ91631)

STJ91631

GENERAL INFORMATION

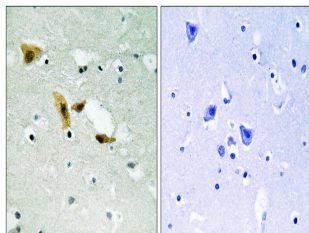
Product Type	Primary antibodies
Short Description	Rabbit polyclonal antibody anti-Aprataxin and PNK-like factor (82-131 aa) is suitable for use in Western Blot, Immunohistochemistry, Immunofluorescence and ELISA research applications.
Applications	WB/IHC/IF/ELISA
Host/Source	Rabbit
Reactivity	Human/Mouse

PRODUCT PROPERTIES

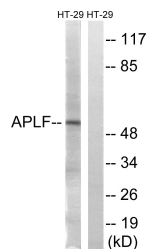
Clonality	Polyclonal
Clone ID	
Concentration	1 mg/mL
Conjugation	Unconjugated
Purification	The antibody was affinity-purified from rabbit antiserum by affinity-chromatography using epitope-specific immunogen.
Dilution Range	WB 1:500-1:2000 IHC 1:100-1:300 ELISA 1:40000 IF 1:50-200
Formulation	Liquid in PBS containing 50% Glycerol, 0.5% BSA and 0.02% Sodium Azide.
Isotype	IgG
Storage Instruction	Store at -20°C for up to 1 year from the date of receipt, and avoid repeat freeze-thaw cycles.

TARGET INFORMATION

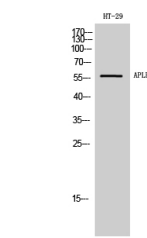
Gene ID	200558
Gene Symbol	APLF
Uniprot ID	APLF_HUMAN
Immunogen	The antiserum was produced against synthesized peptide derived from the human APLF at the amino acid range 82-131
Immunogen Region	82-131 aa
Specificity	APLF Polyclonal Antibody detects endogenous levels of APLF protein.
Immunogen Sequence	



Immunohistochemistry analysis of paraffin-embedded human brain tissue, using APLF Antibody. The picture on the right is blocked with the synthesized peptide.



Western blot analysis of lysates from HT-29 cells, using APLF Antibody. The lane on the right is blocked with the synthesized peptide.



Western blot analysis of HT-29 cells using APLF Polyclonal Antibody