

Anti-AMOTL1 antibody (441-490 aa) (STJ91593)

STJ91593

GENERAL INFORMATION

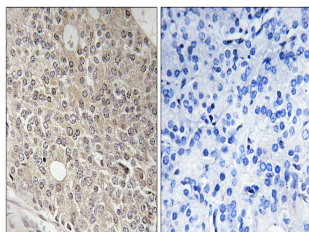
Product Type	Primary antibodies
Short Description	Rabbit polyclonal antibody anti-Angiotensin-like protein 1 (441-490 aa) is suitable for use in Immunohistochemistry, Immunofluorescence and ELISA research applications.
Applications	IHC/IF/ELISA
Host/Source	Rabbit
Reactivity	Human/Mouse

PRODUCT PROPERTIES

Clonality	Polyclonal
Clone ID	
Concentration	1 mg/mL
Conjugation	Unconjugated
Purification	The antibody was affinity-purified from rabbit antiserum by affinity-chromatography using epitope-specific immunogen.
Dilution Range	IHC 1:100-1:300 ELISA 1:10000 IF 1:50-200
Formulation	Liquid in PBS containing 50% Glycerol, 0.5% BSA and 0.02% Sodium Azide.
Isotype	IgG
Storage Instruction	Store at -20°C for up to 1 year from the date of receipt, and avoid repeat freeze-thaw cycles.

TARGET INFORMATION

Gene ID	154810
Gene Symbol	AMOTL1
Uniprot ID	AMOL1_HUMAN
Immunogen	The antiserum was produced against synthesized peptide derived from the human AMOTL1 at the amino acid range 441-490
Immunogen Region	441-490 aa
Specificity	Angiotensin-L1 Polyclonal Antibody detects endogenous levels of Angiotensin-L1 protein.
Immunogen Sequence	



Immunohistochemistry analysis of paraffin-embedded human prostate carcinoma tissue, using AMOTL1 Antibody. The picture on the right is blocked with the synthesized peptide.

This product is suitable for in-vitro studies under the RESEARCH USE ONLY [RUO] licence. This product must not be used as for diagnostic or other medical purposes.
St John's Laboratory Ltd, Knowledge Dock Business Centre, University Way, London, E16 2RD | Tel: 0208 223 3081