

Anti-ALPK2 antibody (1741-1790 aa) (STJ91565)

STJ91565

GENERAL INFORMATION

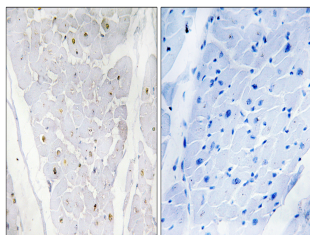
| | |
|--------------------------|--|
| Product Type | Primary antibodies |
| Short Description | Rabbit polyclonal antibody anti-Alpha-protein kinase 2 (1741-1790 aa) is suitable for use in Immunohistochemistry, Immunofluorescence and ELISA research applications. |
| Applications | IHC/IF/ELISA |
| Host/Source | Rabbit |
| Reactivity | Human/Rat/Mouse |

PRODUCT PROPERTIES

| | |
|----------------------------|---|
| Clonality | Polyclonal |
| Clone ID | |
| Concentration | 1 mg/mL |
| Conjugation | Unconjugated |
| Purification | The antibody was affinity-purified from rabbit antiserum by affinity-chromatography using epitope-specific immunogen. |
| Dilution Range | IHC 1:100-1:300 ELISA 1:40000 IF 1:50-200 |
| Formulation | Liquid in PBS containing 50% Glycerol, 0.5% BSA and 0.02% Sodium Azide. |
| Isotype | IgG |
| Storage Instruction | Store at -20°C for up to 1 year from the date of receipt, and avoid repeat freeze-thaw cycles. |

TARGET INFORMATION

| | |
|---------------------------|---|
| Gene ID | 115701 |
| Gene Symbol | ALPK2 |
| Uniprot ID | ALPK2_HUMAN |
| Immunogen | The antiserum was produced against synthesized peptide derived from the human ALPK2 at the amino acid range 1741-1790 |
| Immunogen Region | 1741-1790 aa |
| Specificity | Alpha-protein Kinase 2 Polyclonal Antibody detects endogenous levels of Alpha-protein Kinase 2 protein. |
| Immunogen Sequence | |



Immunohistochemistry analysis of paraffin-embedded human heart, using ALPK2 Antibody. The picture on the right is blocked with the synthesized peptide.

This product is suitable for in-vitro studies under the RESEARCH USE ONLY [RUO] licence. This product must not be used as for diagnostic or other medical purposes.
St John's Laboratory Ltd, Knowledge Dock Business Centre, University Way, London, E16 2RD | Tel: 0208 223 3081