

Anti-AKAP8 antibody (331-380 aa) (STJ91533)

STJ91533

GENERAL INFORMATION

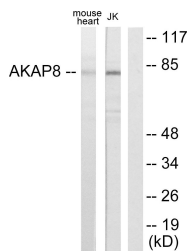
Product Type	Primary antibodies
Short Description	Rabbit polyclonal antibody anti-A-kinase anchor protein 8 (331-380 aa) is suitable for use in Western Blot, Immunohistochemistry, Immunofluorescence and ELISA research applications.
Applications	WB/IHC/IF/ELISA
Host/Source	Rabbit
Reactivity	Human/Mouse/Rat

PRODUCT PROPERTIES

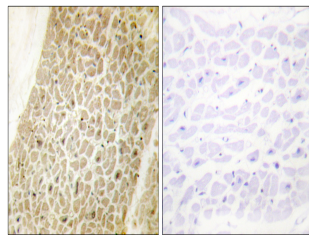
Clonality	Polyclonal
Clone ID	
Concentration	1 mg/mL
Conjugation	Unconjugated
Purification	The antibody was affinity-purified from rabbit antiserum by affinity-chromatography using epitope-specific immunogen.
Dilution Range	WB 1:500-1:2000 IHC 1:100-1:300 IF 1:200-1:1000 ELISA 1:20000
Formulation	Liquid in PBS containing 50% Glycerol, 0.5% BSA and 0.02% Sodium Azide.
Isotype	IgG
Storage Instruction	Store at -20°C for up to 1 year from the date of receipt, and avoid repeat freeze-thaw cycles.

TARGET INFORMATION

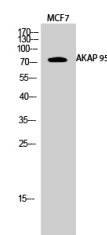
Gene ID	10270
Gene Symbol	AKAP8
Uniprot ID	AKAP8_HUMAN
Immunogen	The antiserum was produced against synthesized peptide derived from the human AKAP8 at the amino acid range 331-380
Immunogen Region	331-380 aa
Specificity	AKAP 95 Polyclonal Antibody detects endogenous levels of AKAP 95 protein.
Immunogen Sequence	



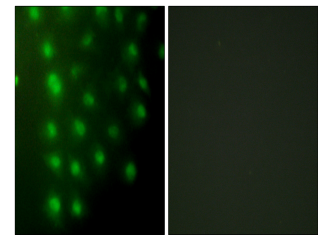
Western blot analysis of lysates from mouse heart and Jurkat cells, using AKAP8 Antibody. The lane on the right is blocked with the synthesized peptide.



Immunohistochemistry analysis of paraffin-embedded human heart tissue, using AKAP8 Antibody. The picture on the right is blocked with the synthesized peptide.



Western blot analysis of MCF7 cells using AKAP 95 Polyclonal Antibody diluted at 1:1000 cells nucleus extracted by Minute TM Cytoplasmic and Nuclear Fractionation kit (SC-003, Inventiotech, MN, USA).



Immunofluorescence analysis of HUVEC cells, using AKAP8 Antibody. The picture on the right is blocked with the synthesized peptide.