

## Anti-AKAP3 antibody (191-240 aa) (STJ91525)

STJ91525

### GENERAL INFORMATION

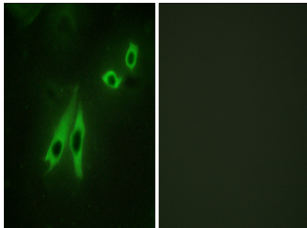
<b>Product Type</b>	Primary antibodies
<b>Short Description</b>	Rabbit polyclonal antibody anti-A-kinase anchor protein 3 (191-240 aa) is suitable for use in Immunofluorescence and ELISA research applications.
<b>Applications</b>	IF/ELISA
<b>Host/Source</b>	Rabbit
<b>Reactivity</b>	Human/Mouse

### PRODUCT PROPERTIES

<b>Clonality</b>	Polyclonal
<b>Clone ID</b>	
<b>Concentration</b>	1 mg/mL
<b>Conjugation</b>	Unconjugated
<b>Purification</b>	The antibody was affinity-purified from rabbit antiserum by affinity-chromatography using epitope-specific immunogen.
<b>Dilution Range</b>	IF 1:200-1:1000 ELISA 1:10000
<b>Formulation</b>	Liquid in PBS containing 50% Glycerol, 0.5% BSA and 0.02% Sodium Azide.
<b>Isotype</b>	IgG
<b>Storage</b>	Store at -20°C for up to 1 year from the date of receipt, and avoid repeat freeze-thaw cycles.
<b>Instruction</b>	

### TARGET INFORMATION

<b>Gene ID</b>	10566
<b>Gene Symbol</b>	AKAP3
<b>Uniprot ID</b>	AKAP3_HUMAN
<b>Immunogen</b>	The antiserum was produced against synthesized peptide derived from the human AKAP3 at the amino acid range 191-240
<b>Immunogen Region</b>	191-240 aa
<b>Specificity</b>	AKAP 110 Polyclonal Antibody detects endogenous levels of AKAP 110 protein.
<b>Immunogen Sequence</b>	



Immunofluorescence analysis of NIH/3T3 cells, using AKAP3 Antibody. The picture on the right is blocked with the synthesized peptide.