

Anti-ADORA1 antibody (277-326 aa) (STJ91493)

STJ91493

GENERAL INFORMATION

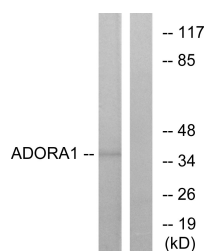
Product Type	Primary antibodies
Short Description	Rabbit polyclonal antibody anti-Adenosine receptor A1 (277-326 aa) is suitable for use in Western Blot, Immunofluorescence and ELISA research applications.
Applications	WB/IF/ELISA
Host/Source	Rabbit
Reactivity	Human/Rat

PRODUCT PROPERTIES

Clonality	Polyclonal
Clone ID	
Concentration	1 mg/mL
Conjugation	Unconjugated
Purification	The antibody was affinity-purified from rabbit antiserum by affinity-chromatography using epitope-specific immunogen.
Dilution Range	WB 1:500-1:2000 IF 1:200-1:1000 ELISA 1:20000
Formulation	Liquid in PBS containing 50% Glycerol, 0.5% BSA and 0.02% Sodium Azide.
Isotype	IgG
Storage Instruction	Store at -20°C for up to 1 year from the date of receipt, and avoid repeat freeze-thaw cycles.

TARGET INFORMATION

Gene ID	134
Gene Symbol	ADORA1
Uniprot ID	AA1R_HUMAN
Immunogen	The antiserum was produced against synthesized peptide derived from the human ADORA1 at the amino acid range 277-326
Immunogen Region	277-326 aa
Specificity	Adenosine A1-R Polyclonal Antibody detects endogenous levels of Adenosine A1-R protein.
Immunogen Sequence	



Western blot analysis of lysates from MCF-7 cells, using ADORA1 Antibody. The lane on the right is blocked with the synthesized peptide.

This product is suitable for in-vitro studies under the RESEARCH USE ONLY [RUO] licence. This product must not be used as for diagnostic or other medical purposes.
St John's Laboratory Ltd, Knowledge Dock Business Centre, University Way, London, E16 2RD | Tel: 0208 223 3081