

## Anti-ADD1 antibody (411-460 aa) (STJ91489)

STJ91489

### GENERAL INFORMATION

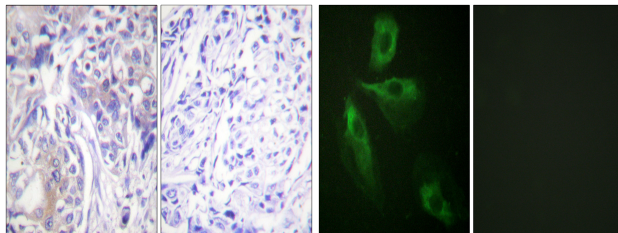
|                          |   |
|--------------------------|---|
| <b>Product Type</b>      | Primary antibodies  |
| <b>Short Description</b> | Rabbit polyclonal antibody anti-Alpha-adducin (411-460 aa) is suitable for use in Immunohistochemistry, Immunofluorescence and ELISA research applications. |
| <b>Applications</b>      | IHC/IF/ELISA  |
| <b>Host/Source</b>       | Rabbit  |
| <b>Reactivity</b>        | Human/Mouse/Rat   |

### PRODUCT PROPERTIES

|                            |   |
|----------------------------|---|
| <b>Clonality</b>           | Polyclonal  |
| <b>Clone ID</b>            |   |
| <b>Concentration</b>       | 1 mg/mL   |
| <b>Conjugation</b>         | Unconjugated  |
| <b>Purification</b>        | The antibody was affinity-purified from rabbit antiserum by affinity-chromatography using epitope-specific immunogen. |
| <b>Dilution Range</b>      | IHC 1:100-1:300<br>IF 1:200-1:1000<br>ELISA 1:10000   |
| <b>Formulation</b>         | Liquid in PBS containing 50% Glycerol, 0.5% BSA and 0.02% Sodium Azide.   |
| <b>Isotype</b>             | IgG   |
| <b>Storage Instruction</b> | Store at -20°C for up to 1 year from the date of receipt, and avoid repeat freeze-thaw cycles.                        |

### TARGET INFORMATION

|                           |  |
|---------------------------|--|
| <b>Gene ID</b>            | 118  |
| <b>Gene Symbol</b>        | ADD1   |
| <b>Uniprot ID</b>         | ADDA_HUMAN   |
| <b>Immunogen</b>          | The antiserum was produced against synthesized peptide derived from the human ADD1 at the amino acid range 411-460 |
| <b>Immunogen Region</b>   | 411-460 aa   |
| <b>Specificity</b>        | ADD1 Polyclonal Antibody detects endogenous levels of ADD1 protein.  |
| <b>Immunogen Sequence</b> |  |



Immunohistochemistry analysis of paraffin-embedded human breast carcinoma tissue, using ADD1 Antibody. The picture on the right is blocked with the synthesized peptide.

Immunofluorescence analysis of HeLa cells, using ADD1 Antibody. The picture on the right is blocked with the synthesized peptide.

This product is suitable for in-vitro studies under the RESEARCH USE ONLY [RUO] licence. This product must not be used as for diagnostic or other medical purposes.  
St John's Laboratory Ltd, Knowledge Dock Business Centre, University Way, London, E16 2RD | Tel: 0208 223 3081