

## Anti-ADCK5 antibody (151-200 aa) (STJ91488)

STJ91488

### GENERAL INFORMATION

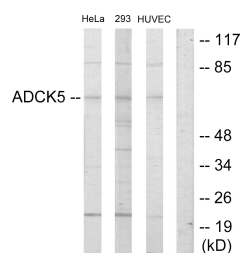
<b>Product Type</b>	Primary antibodies
<b>Short Description</b>	Rabbit polyclonal antibody anti-Uncharacterized aarF domain-containing protein kinase 5 (151-200 aa) is suitable for use in Western Blot, Immunofluorescence and ELISA research applications.
<b>Applications</b>	WB/IF/ELISA
<b>Host/Source</b>	Rabbit
<b>Reactivity</b>	Human/Rat/Mouse

### PRODUCT PROPERTIES

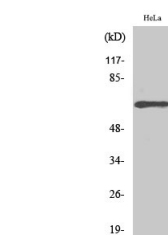
<b>Clonality</b>	Polyclonal
<b>Clone ID</b>	
<b>Concentration</b>	1 mg/mL
<b>Conjugation</b>	Unconjugated
<b>Purification</b>	The antibody was affinity-purified from rabbit antiserum by affinity-chromatography using epitope-specific immunogen.
<b>Dilution Range</b>	WB 1:500-1:2000 IF 1:200-1:1000 ELISA 1:20000
<b>Formulation</b>	Liquid in PBS containing 50% Glycerol, 0.5% BSA and 0.02% Sodium Azide.
<b>Isotype</b>	IgG
<b>Storage Instruction</b>	Store at -20°C for up to 1 year from the date of receipt, and avoid repeat freeze-thaw cycles.

### TARGET INFORMATION

<b>Gene ID</b>	203054
<b>Gene Symbol</b>	ADCK5
<b>Uniprot ID</b>	ADCK5_HUMAN
<b>Immunogen</b>	The antiserum was produced against synthesized peptide derived from the human ADCK5 at the amino acid range 151-200
<b>Immunogen Region</b>	151-200 aa
<b>Specificity</b>	ADCK5 Polyclonal Antibody detects endogenous levels of ADCK5 protein.
<b>Immunogen Sequence</b>	



Western blot analysis of lysates from HeLa, 293, and HUVEC cells, using ADCK5 Antibody. The lane on the right is blocked with the synthesized peptide.



Western blot analysis of various cells using ADCK5 Polyclonal Antibody