

Anti-ADCK1 antibody (251-300 aa) (STJ91485)

STJ91485

GENERAL INFORMATION

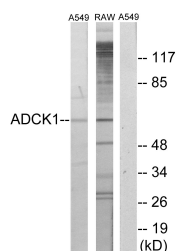
Product Type	Primary antibodies
Short Description	Rabbit polyclonal antibody anti-AarF domain-containing protein kinase 1 (251-300 aa) is suitable for use in Western Blot, Immunohistochemistry, Immunofluorescence and ELISA research applications.
Applications	WB/IHC/IF/ELISA
Host/Source	Rabbit
Reactivity	Human/Mouse

PRODUCT PROPERTIES

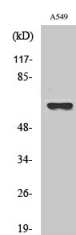
Clonality	Polyclonal
Clone ID	
Concentration	1 mg/mL
Conjugation	Unconjugated
Purification	The antibody was affinity-purified from rabbit antiserum by affinity-chromatography using epitope-specific immunogen.
Dilution	WB 1:500-1:2000
Range	IHC 1:100-1:300 IF 1:200-1:1000 ELISA 1:5000
Formulation	Liquid in PBS containing 50% Glycerol, 0.5% BSA and 0.02% Sodium Azide.
Isotype	IgG
Storage Instruction	Store at -20°C for up to 1 year from the date of receipt, and avoid repeat freeze-thaw cycles.

TARGET INFORMATION

Gene ID	57143
Gene Symbol	ADCK1
Uniprot ID	ADCK1_HUMAN
Immunogen	The antiserum was produced against synthesized peptide derived from the human ADCK1 at the amino acid range 251-300
Immunogen Region	251-300 aa
Specificity	ADCK1 Polyclonal Antibody detects endogenous levels of ADCK1 protein.
Immunogen Sequence	



Western blot analysis of lysates from A549 and RAW264.7 cells, using ADCK1 Antibody. The lane on the right is blocked with the synthesized peptide.



Western blot analysis of various cells using ADCK1 Polyclonal Antibody