

Anti-ACTB antibody (1-80 aa) (STJ91464)

STJ91464

GENERAL INFORMATION

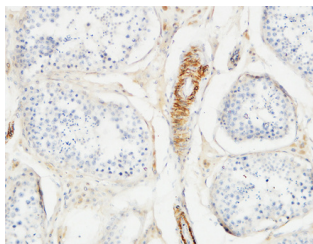
Product Type	Primary antibodies
Short Description	Rabbit polyclonal antibody anti-Actin, cytoplasmic 1 (1-80 aa) is suitable for use in Immunofluorescence, Western Blot, Immunohistochemistry and ELISA research applications.
Applications	IF/WB/IHC/ELISA
Host/Source	Rabbit
Reactivity	Human/Mouse/Rat/Chicken/Globefish/Cow/Hamster/Pig/Sheep/Cat/Pig/Dog/Sheep

PRODUCT PROPERTIES

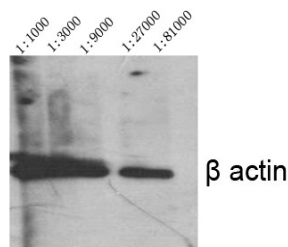
Clonality	Polyclonal
Clone ID	
Concentration	1 mg/mL
Conjugation	Unconjugated
Purification	The antibody was affinity-purified from rabbit antiserum by affinity-chromatography using epitope-specific immunogen.
Dilution Range	IF 1:50-200 WB 1:2000-1:10000 IHC 1:100-1:300 ELISA 1:20000
Formulation	Liquid in PBS containing 50% Glycerol, 0.5% BSA and 0.02% Sodium Azide.
Isotype	IgG
Storage Instruction	Store at -20°C for up to 1 year from the date of receipt, and avoid repeat freeze-thaw cycles.

TARGET INFORMATION

Gene ID	60
Gene Symbol	ACTB
Uniprot ID	ACTB_HUMAN
Immunogen	Synthesized peptide derived from the N-terminal region of human Actin Beta at the amino acid range 1-80
Immunogen Region	1-80 aa
Specificity	Actin Beta Polyclonal Antibody detects endogenous levels of Actin Beta protein.
Immunogen Sequence	



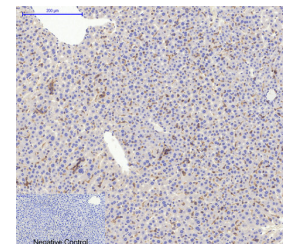
Immunohistochemical analysis of paraffin-embedded Human testis. 1. Antibody was diluted at 1:100 (4A°C overnight). 2. High-pressure and temperature EDTA, pH8.0 was used for antigen retrieval. 3. Secondary antibody was diluted at 1:200 (room temperature, 30min).



Western blot analysis of various cells using Actin Beta Polyclonal Antibody diluted at 1:1000



Western blot analysis of customer's lysis using Actin Beta antibody. Antibody was diluted at 1:2000



Immunohistochemical analysis of paraffin-embedded Mouse-liver tissue. 1. Actin Beta Polyclonal Antibody was diluted at 1:200 (4A°C, overnight). 2. Sodium citrate pH 6.0 was used for antibody retrieval (>98A°C, 20min). 3. Secondary antibody was diluted at 1:200 (room temperature, 30min). Negative control was used by secondary antibody only.

This product is suitable for in-vitro studies under the RESEARCH USE ONLY [RUO] licence. This product must not be used as for diagnostic or other medical purposes.
St John's Laboratory Ltd, Knowledge Dock Business Centre, University Way, London, E16 2RD | Tel: 0208 223 3081