

Anti-ACTG2 antibody (1-50 aa) (STJ91463)

STJ91463

GENERAL INFORMATION

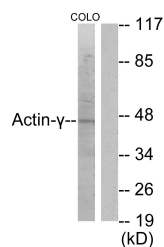
Product Type	Primary antibodies
Short Description	Rabbit polyclonal antibody anti-Actin, gamma-enteric smooth muscle (1-50 aa) is suitable for use in Western Blot, Immunohistochemistry, Immunofluorescence and ELISA research applications.
Applications	WB/IHC/IF/ELISA
Host/Source	Rabbit
Reactivity	Human/Mouse/Rat

PRODUCT PROPERTIES

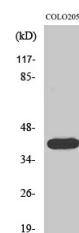
Clonality	Polyclonal
Clone ID	
Concentration	1 mg/mL
Conjugation	Unconjugated
Purification	The antibody was affinity-purified from rabbit antiserum by affinity-chromatography using epitope-specific immunogen.
Dilution Range	WB 1:500-1:2000 IHC 1:100-1:300 IF 1:200-1:1000 ELISA 1:20000
Formulation	Liquid in PBS containing 50% Glycerol, 0.5% BSA and 0.02% Sodium Azide.
Isotype	IgG
Storage	Store at -20°C for up to 1 year from the date of receipt, and avoid repeat freeze-thaw cycles.
Instruction	

TARGET INFORMATION

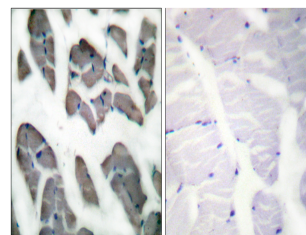
Gene ID	72
Gene Symbol	ACTG2
Uniprot ID	ACTH_HUMAN
Immunogen	The antiserum was produced against synthesized peptide derived from the human Actin-gamma2 at the amino acid range 1-50
Immunogen Region	1-50 aa
Specificity	Actin Alpha 3 Polyclonal Antibody detects endogenous levels of Actin Alpha 3 protein.
Immunogen Sequence	



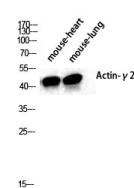
Western blot analysis of lysates from COLO205 cells, using Actin-gamma2 Antibody. The lane on the right is blocked with the synthesized peptide.



Western blot analysis of COLO205 cells using Actin Alpha 3 Polyclonal Antibody diluted at 1:4 2000



Immunohistochemistry analysis of paraffin-embedded human skeletal muscle tissue, using Actin-gamma2 Antibody. The picture on the right is blocked with the synthesized peptide.



Western blot analysis of various cells using Actin Alpha 3 Polyclonal Antibody diluted at 1:4 2000