

Anti-ACTA1 antibody (1-50 aa) (STJ91462)

STJ91462

GENERAL INFORMATION

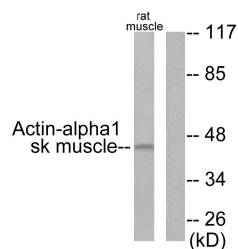
Product Type	Primary antibodies
Short Description	Rabbit polyclonal antibody anti-Actin, alpha skeletal muscle (1-50 aa) is suitable for use in Western Blot, Immunohistochemistry, Immunofluorescence and ELISA research applications.
Applications	WB/IHC/IF/ELISA
Host/Source	Rabbit
Reactivity	Human/Mouse/Rat

PRODUCT PROPERTIES

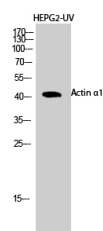
Clonality	Polyclonal
Clone ID	
Concentration	1 mg/mL
Conjugation	Unconjugated
Purification	The antibody was affinity-purified from rabbit antiserum by affinity-chromatography using epitope-specific immunogen.
Dilution Range	WB 1:500-1:2000 IHC 1:100-1:300 ELISA 1:20000 IF 1:50-200
Formulation	Liquid in PBS containing 50% Glycerol, 0.5% BSA and 0.02% Sodium Azide.
Isotype	IgG
Storage Instruction	Store at -20°C for up to 1 year from the date of receipt, and avoid repeat freeze-thaw cycles.

TARGET INFORMATION

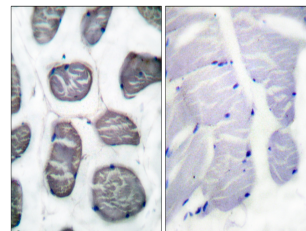
Gene ID	58
Gene Symbol	ACTA1
Uniprot ID	ACTS_HUMAN
Immunogen	The antiserum was produced against synthesized peptide derived from the human Actin-alpha-1 at the amino acid range 1-50
Immunogen Region	1-50 aa
Specificity	Actin Alpha 1 Polyclonal Antibody detects endogenous levels of Actin Alpha 1 protein.
Immunogen Sequence	



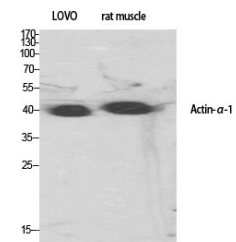
Western blot analysis of lysates from rat muscle cells, using Actin-alpha-1 Antibody. The lane on the right is blocked with the synthesized peptide.



Western blot analysis of HEPG2-UV cells using Actin Alpha 1 Polyclonal Antibody diluted at 1:1/4 500



Immunohistochemistry analysis of paraffin-embedded human muscle tissue, using Actin-alpha-1 Antibody. The picture on the right is blocked with the synthesized peptide.



Western blot analysis of various cells using Actin Alpha 1 Polyclonal Antibody diluted at 1:1/4 500