

## Anti-ADIPOQ antibody (6-55 aa) (STJ91456)

STJ91456

### GENERAL INFORMATION

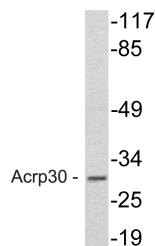
<b>Product Type</b>	Primary antibodies
<b>Short Description</b>	Rabbit polyclonal antibody anti-Adiponectin (6-55 aa) is suitable for use in Western Blot and ELISA research applications.
<b>Applications</b>	WB/ELISA
<b>Host/Source</b>	Rabbit
<b>Reactivity</b>	Human/Mouse/Rat

### PRODUCT PROPERTIES

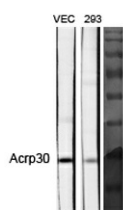
<b>Clonality</b>	Polyclonal
<b>Clone ID</b>	
<b>Concentration</b>	1 mg/mL
<b>Conjugation</b>	Unconjugated
<b>Purification</b>	The antibody was affinity-purified from rabbit antiserum by affinity-chromatography using epitope-specific immunogen.
<b>Dilution Range</b>	WB 1:500-1:2000 ELISA 1:10000
<b>Formulation</b>	Liquid in PBS containing 50% Glycerol, 0.5% BSA and 0.02% Sodium Azide.
<b>Isotype</b>	IgG
<b>Storage Instruction</b>	Store at -20°C for up to 1 year from the date of receipt, and avoid repeat freeze-thaw cycles.

### TARGET INFORMATION

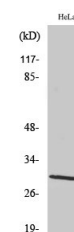
<b>Gene ID</b>	9370
<b>Gene Symbol</b>	ADIPOQ
<b>Uniprot ID</b>	ADIPO_HUMAN
<b>Immunogen</b>	The antiserum was produced against synthesized peptide derived from the human Acrp30 at the amino acid range 6-55
<b>Immunogen Region</b>	6-55 aa
<b>Specificity</b>	Acrp30 Polyclonal Antibody detects endogenous levels of Acrp30 protein.
<b>Immunogen Sequence</b>	



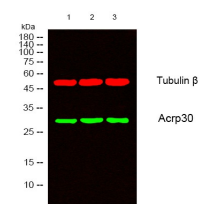
Western blot analysis of lysate from HeLa cells, using Acrp30 antibody.



Western blot analysis of various cells using Acrp30 Polyclonal Antibody diluted at 1/1000



Western blot analysis of HeLa cells using Acrp30 Polyclonal Antibody diluted at 1/1000



Western blot analysis of lysates from 1) HeLa, 2) VEC, 3) 293 cells, 1/4 Green1/4 primary antibody was diluted at 1:1000, 4A°C over night, secondary antibody (cat: (NA) was diluted at 1:10000, 37A°C 1hour, 1/4 Red1/4 Tubulin - Beta monoclonal antibody (5G3) (cat: (STJ96932) antibody was diluted at 1:5000 as loading control, 4A°C over night, secondary antibody (cat: (NA) was diluted at 1:10000, 37A°C 1hour.

This product is suitable for in-vitro studies under the RESEARCH USE ONLY [RUO] licence. This product must not be used as for diagnostic or other medical purposes.  
St John's Laboratory Ltd, Knowledge Dock Business Centre, University Way, London, E16 2RD | Tel: 0208 223 3081