

Anti-ACE2 antibody (416-465 aa) (STJ91442)

STJ91442

GENERAL INFORMATION

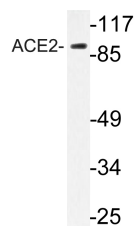
Product Type	Primary antibodies
Short Description	Rabbit polyclonal antibody anti-Angiotensin-converting enzyme 2 (416-465 aa) is suitable for use in Western Blot and ELISA research applications.
Applications	WB/ELISA
Host/Source	Rabbit
Reactivity	Human/Mouse

PRODUCT PROPERTIES

Clonality	Polyclonal
Clone ID	
Concentration	1 mg/mL
Conjugation	Unconjugated
Purification	The antibody was affinity-purified from rabbit antiserum by affinity-chromatography using epitope-specific immunogen.
Dilution Range	WB 1:500-1:2000 ELISA 1:40000
Formulation	Liquid in PBS containing 50% Glycerol, 0.5% BSA and 0.02% Sodium Azide.
Isotype	IgG
Storage Instruction	Store at -20°C for up to 1 year from the date of receipt, and avoid repeat freeze-thaw cycles.

TARGET INFORMATION

Gene ID	59272
Gene Symbol	ACE2
Uniprot ID	ACE2_HUMAN
Immunogen	The antiserum was produced against synthesized peptide derived from the human ACE2 at the amino acid range 416-465
Immunogen Region	416-465 aa
Specificity	ACE2 Polyclonal Antibody detects endogenous levels of ACE2 protein.
Immunogen Sequence	



Western blot analysis of lysate from HeLa cells, using ACE2 antibody.

This product is suitable for in-vitro studies under the RESEARCH USE ONLY [RUO] licence. This product must not be used as for diagnostic or other medical purposes.
St John's Laboratory Ltd, Knowledge Dock Business Centre, University Way, London, E16 2RD | Tel: 0208 223 3081