

Anti-ACE antibody (891-940 aa) (STJ91441)

STJ91441

GENERAL INFORMATION

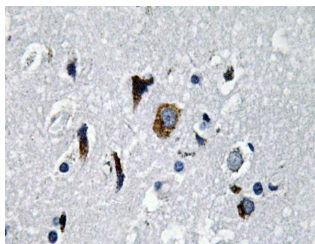
Product Type	Primary antibodies
Short Description	Rabbit polyclonal antibody anti-Angiotensin-converting enzyme (891-940 aa) is suitable for use in Western Blot, Immunohistochemistry, Immunofluorescence and ELISA research applications.
Applications	WB/IHC/IF/ELISA
Host/Source	Rabbit
Reactivity	Human/Mouse/Rat

PRODUCT PROPERTIES

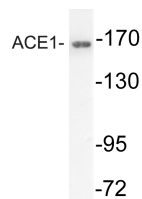
Clonality	Polyclonal
Clone ID	
Concentration	1 mg/mL
Conjugation	Unconjugated
Purification	The antibody was affinity-purified from rabbit antiserum by affinity-chromatography using epitope-specific immunogen.
Dilution Range	WB 1:500-1:2000 IHC 1:100-1:300 ELISA 1:10000 IF 1:50-200
Formulation	Liquid in PBS containing 50% Glycerol, 0.5% BSA and 0.02% Sodium Azide.
Isotype	IgG
Storage Instruction	Store at -20°C for up to 1 year from the date of receipt, and avoid repeat freeze-thaw cycles.

TARGET INFORMATION

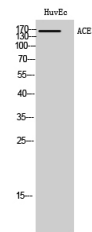
Gene ID	1636
Gene Symbol	ACE
Uniprot ID	ACE_HUMAN
Immunogen	The antiserum was produced against synthesized peptide derived from the human ACE1 at the amino acid range 891-940
Immunogen Region	891-940 aa
Specificity	ACE1 Polyclonal Antibody detects endogenous levels of ACE1 protein.
Immunogen Sequence	



Immunohistochemistry analysis of ACE1 antibody in paraffin-embedded human brain tissue.



Western blot analysis of lysates from mouse kidney, using ACE1 antibody.



Western blot analysis of HuvEc cells using ACE1 Polyclonal Antibody diluted at 1/4 1000

This product is suitable for in-vitro studies under the RESEARCH USE ONLY [RUO] licence. This product must not be used as for diagnostic or other medical purposes.
St John's Laboratory Ltd, Knowledge Dock Business Centre, University Way, London, E16 2RD | Tel: 0208 223 3081