

Anti-ACBD6 antibody (121-170 aa) (STJ91437)

STJ91437

GENERAL INFORMATION

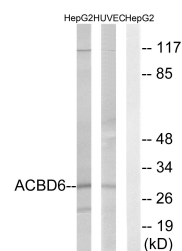
Product Type	Primary antibodies
Short Description	Rabbit polyclonal antibody anti-Acyl-CoA-binding domain-containing protein 6 (121-170 aa) is suitable for use in Western Blot, Immunohistochemistry, Immunofluorescence and ELISA research applications.
Applications	WB/IHC/IF/ELISA
Host/Source	Rabbit
Reactivity	Human/Mouse/Rat

PRODUCT PROPERTIES

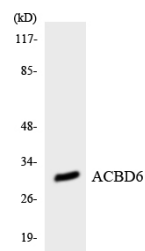
Clonality	Polyclonal
Clone ID	
Concentration	1 mg/mL
Conjugation	Unconjugated
Purification	The antibody was affinity-purified from rabbit antiserum by affinity-chromatography using epitope-specific immunogen.
Dilution Range	WB 1:500-1:2000 IHC 1:100-1:300 ELISA 1:10000 IF 1:50-200
Formulation	Liquid in PBS containing 50% Glycerol, 0.5% BSA and 0.02% Sodium Azide.
Isotype	IgG
Storage Instruction	Store at -20°C for up to 1 year from the date of receipt, and avoid repeat freeze-thaw cycles.

TARGET INFORMATION

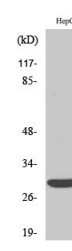
Gene ID	84320
Gene Symbol	ACBD6
Uniprot ID	ACBD6_HUMAN
Immunogen	The antiserum was produced against synthesized peptide derived from the human ACBD6 at the amino acid range 121-170
Immunogen Region	121-170 aa
Specificity	ACBD6 Polyclonal Antibody detects endogenous levels of ACBD6 protein.
Immunogen Sequence	



Western blot analysis of lysates from HepG2 and HUVEC cells, using ACBD6 Antibody. The lane on the right is blocked with the synthesized peptide.



Western blot analysis of the lysates from K562 cells using ACBD6 antibody.



Western blot analysis of various cells using ACBD6 Polyclonal Antibody diluted at 1/4 1000