

Anti-ABCC12 antibody (691-740 aa) (STJ91412)

STJ91412

GENERAL INFORMATION

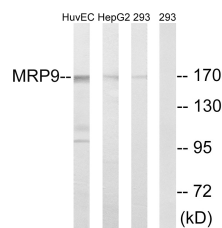
Product Type	Primary antibodies
Short Description	Rabbit polyclonal antibody anti-ATP-binding cassette sub-family C member 12 (691-740 aa) is suitable for use in Western Blot and ELISA research applications.
Applications	WB/ELISA
Host/Source	Rabbit
Reactivity	Human/Rat/Mouse

PRODUCT PROPERTIES

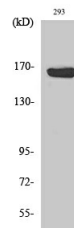
Clonality	Polyclonal
Clone ID	
Concentration	1 mg/mL
Conjugation	Unconjugated
Purification	The antibody was affinity-purified from rabbit antiserum by affinity-chromatography using epitope-specific immunogen.
Dilution Range	WB 1:500-1:2000 ELISA 1:20000
Formulation	Liquid in PBS containing 50% Glycerol, 0.5% BSA and 0.02% Sodium Azide.
Isotype	IgG
Storage	Store at -20°C for up to 1 year from the date of receipt, and avoid repeat freeze-thaw cycles.
Instruction	

TARGET INFORMATION

Gene ID	94160
Gene Symbol	ABCC12
Uniprot ID	MRP9_HUMAN
Immunogen	The antiserum was produced against synthesized peptide derived from the human MRP9 at the amino acid range 691-740
Immunogen Region	691-740 aa
Specificity	ABCC12 Polyclonal Antibody detects endogenous levels of ABCC12 protein.
Immunogen Sequence	



Western blot analysis of lysates from 293, HepG2, and HUVEC cells, using MRP9 Antibody. The lane on the right is blocked with the synthesized peptide.



Western blot analysis of various cells using ABCC12 Polyclonal Antibody diluted at 1:1000.

This product is suitable for in-vitro studies under the RESEARCH USE ONLY [RUO] licence. This product must not be used as for diagnostic or other medical purposes.
St John's Laboratory Ltd, Knowledge Dock Business Centre, University Way, London, E16 2RD | Tel: 0208 223 3081