

## Anti-AAK1 antibody (271-320 aa) (STJ91403)

STJ91403

### GENERAL INFORMATION

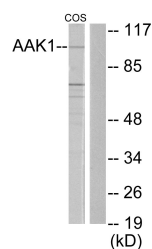
<b>Product Type</b>	Primary antibodies
<b>Short Description</b>	Rabbit polyclonal antibody anti-AP2-associated protein kinase 1 (271-320 aa) is suitable for use in Western Blot, Immunohistochemistry, Immunofluorescence and ELISA research applications.
<b>Applications</b>	WB/IHC/IF/ELISA
<b>Host/Source</b>	Rabbit
<b>Reactivity</b>	Human/Mouse/Rat/Monkey

### PRODUCT PROPERTIES

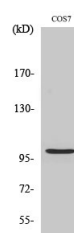
<b>Clonality</b>	Polyclonal
<b>Clone ID</b>	
<b>Concentration</b>	1 mg/mL
<b>Conjugation</b>	Unconjugated
<b>Purification</b>	The antibody was affinity-purified from rabbit antiserum by affinity-chromatography using epitope-specific immunogen.
<b>Dilution Range</b>	WB 1:500-1:2000 IHC 1:100-1:300 IF 1:200-1:1000 ELISA 1:20000
<b>Formulation</b>	Liquid in PBS containing 50% Glycerol, 0.5% BSA and 0.02% Sodium Azide.
<b>Isotype</b>	IgG
<b>Storage</b>	Store at -20°C for up to 1 year from the date of receipt, and avoid repeat freeze-thaw cycles.
<b>Instruction</b>	

### TARGET INFORMATION

<b>Gene ID</b>	22848
<b>Gene Symbol</b>	AAK1
<b>Uniprot ID</b>	AAK1_HUMAN
<b>Immunogen</b>	The antiserum was produced against synthesized peptide derived from the human the amino acidK1 at the amino acid range 271-320
<b>Immunogen Region</b>	271-320 aa
<b>Specificity</b>	AAK1 Polyclonal Antibody detects endogenous levels of AAK1 protein.
<b>Immunogen Sequence</b>	



Western blot analysis of lysates from COS7 cells, using AAK1 Antibody. The lane on the right is blocked with the synthesized peptide.



Western blot analysis of various cells using AAK1 Polyclonal Antibody.