

Anti-ADCY8 antibody (591-640 aa) (STJ91400)

STJ91400

GENERAL INFORMATION

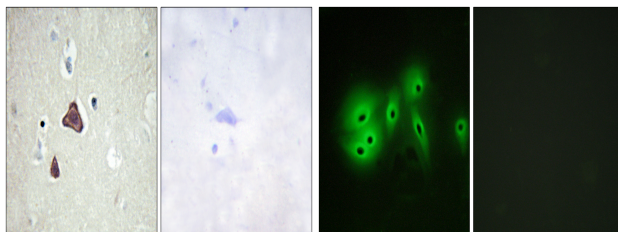
Product Type	Primary antibodies
Short Description	Rabbit polyclonal antibody anti-Adenylate cyclase type 8/calmodulin-activated adenyltyl cyclase (591-640 aa) is suitable for use in Immunohistochemistry, Immunofluorescence and ELISA research applications.
Applications	IHC/IF/ELISA
Host/Source	Rabbit
Reactivity	Human/Mouse/Rat

PRODUCT PROPERTIES

Clonality	Polyclonal
Clone ID	
Concentration	1 mg/mL
Conjugation	Unconjugated
Purification	The antibody was affinity-purified from rabbit antiserum by affinity-chromatography using epitope-specific immunogen.
Dilution	IHC 1:100-1:300
Range	IF 1:200-1:1000 ELISA 1:40000
Formulation	Liquid in PBS containing 50% Glycerol, 0.5% BSA and 0.02% Sodium Azide.
Isotype	IgG
Storage	Store at -20°C for up to 1 year from the date of receipt, and avoid repeat freeze-thaw cycles.
Instruction	

TARGET INFORMATION

Gene ID	114
Gene Symbol	ADCY8
Uniprot ID	ADCY8_HUMAN
Immunogen	The antiserum was produced against synthesized peptide derived from the human ADCY8 at the amino acid range 591-640
Immunogen Region	591-640 aa
Specificity	A Cyclase VIII Polyclonal Antibody detects endogenous levels of A Cyclase VIII protein.
Immunogen Sequence	



Immunohistochemistry analysis of paraffin-embedded human brain tissue, using ADCY8 Antibody. The picture on the right is blocked with the synthesized peptide.

Immunofluorescence analysis of A549 cells, using ADCY8 Antibody. The picture on the right is blocked with the synthesized peptide.

This product is suitable for in-vitro studies under the RESEARCH USE ONLY [RUO] licence. This product must not be used as for diagnostic or other medical purposes.
St John's Laboratory Ltd, Knowledge Dock Business Centre, University Way, London, E16 2RD | Tel: 0208 223 3081