

## Anti-A Cyclase V/VI antibody (931-980 aa) (STJ91398)

STJ91398

### GENERAL INFORMATION

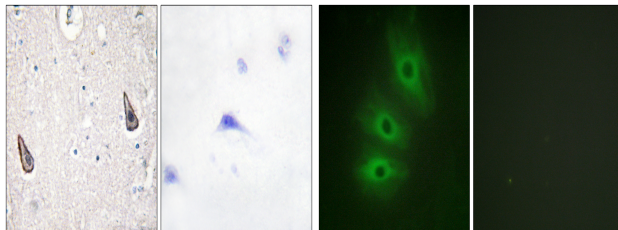
<b>Product Type</b>	Primary antibodies
<b>Short Description</b>	Rabbit polyclonal antibody anti-Adenylate cyclase type 6 and Adenylate cyclase type 5 (931-980 aa) is suitable for use in Immunohistochemistry, Immunofluorescence and ELISA research applications.
<b>Applications</b>	IHC/IF/ELISA
<b>Host/Source</b>	Rabbit
<b>Reactivity</b>	Human/Mouse/Rat

### PRODUCT PROPERTIES

<b>Clonality</b>	Polyclonal
<b>Clone ID</b>	
<b>Concentration</b>	1 mg/mL
<b>Conjugation</b>	Unconjugated
<b>Purification</b>	The antibody was affinity-purified from rabbit antiserum by affinity-chromatography using epitope-specific immunogen.
<b>Dilution</b>	IHC 1:100-1:300
<b>Range</b>	IF 1:200-1:1000 ELISA 1:20000
<b>Formulation</b>	Liquid in PBS containing 50% Glycerol, 0.5% BSA and 0.02% Sodium Azide.
<b>Isotype</b>	IgG
<b>Storage</b>	Store at -20°C for up to 1 year from the date of receipt, and avoid repeat freeze-thaw cycles.
<b>Instruction</b>	

### TARGET INFORMATION

<b>Gene ID</b>	<a href="#">112</a> <a href="#">111</a>
<b>Gene Symbol</b>	<a href="#">ADCY6</a> <a href="#">ADCY5</a>
<b>Uniprot ID</b>	<a href="#">ADCY6_HUMAN</a> <a href="#">ADCY5_HUMAN</a>
<b>Immunogen</b>	The antiserum was produced against synthesized peptide derived from the human ADCY5/6 at the amino acid range 931-980
<b>Immunogen Region</b>	931-980 aa
<b>Specificity</b>	A Cyclase V/VI Polyclonal Antibody detects endogenous levels of A Cyclase V/VI protein.
<b>Immunogen Sequence</b>	



Immunohistochemistry analysis of paraffin-embedded human brain tissue, using ADCY5/6 Antibody. The picture on the right is blocked with the synthesized peptide.

Immunofluorescence analysis of HeLa cells, using ADCY5/6 Antibody. The picture on the right is blocked with the synthesized peptide.