

Anti-ADCY9 antibody (137-186 aa) (STJ91396)

STJ91396

GENERAL INFORMATION

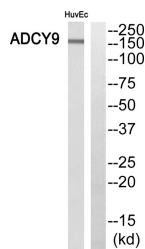
Product Type	Primary antibodies
Short Description	Rabbit polyclonal antibody anti-Adenylate cyclase type 9 (137-186 aa) is suitable for use in Western Blot, Immunohistochemistry, Immunofluorescence and ELISA research applications.
Applications	WB/IHC/IF/ELISA
Host/Source	Rabbit
Reactivity	Human/Rat/Mouse

PRODUCT PROPERTIES

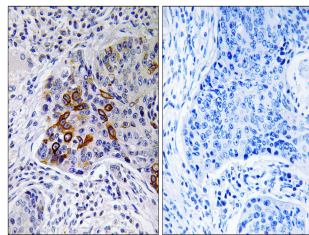
Clonality	Polyclonal
Clone ID	
Concentration	1 mg/mL
Conjugation	Unconjugated
Purification	The antibody was affinity-purified from rabbit antiserum by affinity-chromatography using epitope-specific immunogen.
Dilution Range	WB 1:500-1:2000 IHC 1:100-1:300 ELISA 1:10000 IF 1:50-200
Formulation	Liquid in PBS containing 50% Glycerol, 0.5% BSA and 0.02% Sodium Azide.
Isotype	IgG
Storage Instruction	Store at -20°C for up to 1 year from the date of receipt, and avoid repeat freeze-thaw cycles.

TARGET INFORMATION

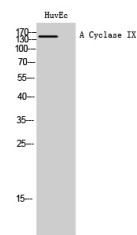
Gene ID	115
Gene Symbol	ADCY9
Uniprot ID	ADCY9_HUMAN
Immunogen	The antiserum was produced against synthesized peptide derived from the human ADCY9 at the amino acid range 137-186
Immunogen Region	137-186 aa
Specificity	A Cyclase IX Polyclonal Antibody detects endogenous levels of A Cyclase IX protein.
Immunogen Sequence	



Western blot analysis of ADCY9 Antibody. The lane on the right is blocked with the ADCY9 peptide.



Immunohistochemistry analysis of paraffin-embedded human lung carcinoma, using ADCY9 Antibody. The lane on the right is blocked with the ADCY9 peptide.



Western blot analysis of HuvEc cells using A Cyclase IX Polyclonal Antibody diluted at 1/4 1000.