

Anti-MAPKAPK3 antibody (301-350 aa) (STJ91379)

STJ91379

GENERAL INFORMATION

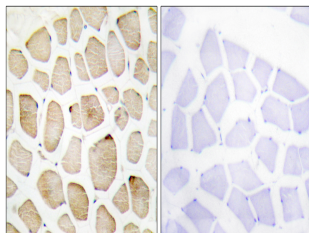
Product Type	Primary antibodies
Short Description	Rabbit polyclonal antibody anti-MAP kinase-activated protein kinase 3 (301-350 aa) is suitable for use in Western Blot, Immunohistochemistry, Immunofluorescence and ELISA research applications.
Applications	WB/IHC/IF/ELISA
Host/Source	Rabbit
Reactivity	Human/Mouse/Rat

PRODUCT PROPERTIES

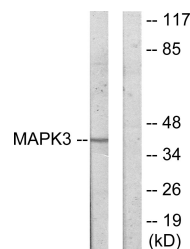
Clonality	Polyclonal
Clone ID	
Concentration	1 mg/mL
Conjugation	Unconjugated
Purification	The antibody was affinity-purified from rabbit antiserum by affinity-chromatography using epitope-specific immunogen.
Dilution	WB 1:500-1:2000
Range	IHC 1:100-1:300 IF 1:200-1:1000 ELISA 1:20000
Formulation	Liquid in PBS containing 50% Glycerol, 0.5% BSA and 0.02% Sodium Azide.
Isotype	IgG
Storage	Store at -20°C for up to 1 year from the date of receipt, and avoid repeat freeze-thaw cycles.
Instruction	

TARGET INFORMATION

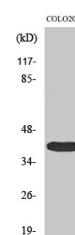
Gene ID	7867
Gene Symbol	MAPKAPK3
Uniprot ID	MAPK3_HUMAN
Immunogen	The antiserum was produced against synthesized peptide derived from the human MAPK3 at the amino acid range 301-350
Immunogen	301-350 aa
Region	
Specificity	3pK Polyclonal Antibody detects endogenous levels of 3pK protein.
Immunogen	
Sequence	



Immunohistochemistry analysis of paraffin-embedded human skeletal muscle tissue, using MAPK3 Antibody. The picture on the right is blocked with the synthesized peptide.



Western blot analysis of lysates from COLO205 cells, using MAPK3 Antibody. The lane on the right is blocked with the synthesized peptide.



Western blot analysis of various cells using 3pK Polyclonal Antibody

This product is suitable for in-vitro studies under the RESEARCH USE ONLY [RUO] licence. This product must not be used as for diagnostic or other medical purposes.
St John's Laboratory Ltd, Knowledge Dock Business Centre, University Way, London, E16 2RD | Tel: 0208 223 3081