

Anti-YWHAQ antibody (196-245 aa) (STJ91376)

STJ91376

GENERAL INFORMATION

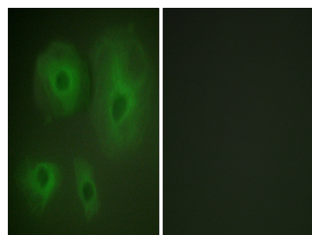
Product Type	Primary antibodies
Short Description	Rabbit polyclonal antibody anti-14-3-3 protein theta (196-245 aa) is suitable for use in Western Blot, Immunohistochemistry, Immunofluorescence and ELISA research applications.
Applications	WB/IHC/IF/ELISA
Host/Source	Rabbit
Reactivity	Human/Mouse/Rat

PRODUCT PROPERTIES

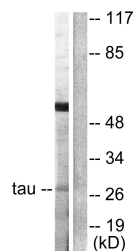
Clonality	Polyclonal
Clone ID	
Concentration	1 mg/mL
Conjugation	Unconjugated
Purification	The antibody was affinity-purified from rabbit antiserum by affinity-chromatography using epitope-specific immunogen.
Dilution Range	WB 1:500-1:2000 IHC 1:100-1:300 IF 1:200-1:1000 ELISA 1:5000
Formulation	Liquid in PBS containing 50% Glycerol, 0.5% BSA and 0.02% Sodium Azide.
Isotype	IgG
Storage Instruction	Store at -20°C for up to 1 year from the date of receipt, and avoid repeat freeze-thaw cycles.

TARGET INFORMATION

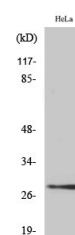
Gene ID	10971
Gene Symbol	YWHAQ
Uniprot ID	1433T_HUMAN
Immunogen	The antiserum was produced against synthesized peptide derived from the human 14-3-3 thet/tau at the amino acid range 196-245
Immunogen Region	196-245 aa
Specificity	14-3-3 Theta/Tau Polyclonal Antibody detects endogenous levels of 14-3-3 Theta/Tau protein.
Immunogen Sequence	



Immunofluorescence analysis of HeLa cells, using 14-3-3 thet/tau Antibody. The picture on the right is blocked with the synthesized peptide.



Western blot analysis of lysates from HeLa cells, using 14-3-3 thet/tau Antibody. The lane on the right is blocked with the synthesized peptide.



Western blot analysis of various cells using 14-3-3 Theta/Tau Polyclonal Antibody diluted at 1/4 500