

Anti-YWHAZ antibody (24-73 aa) (STJ91372)

STJ91372

GENERAL INFORMATION

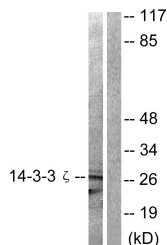
Product Type	Primary antibodies
Short Description	Rabbit polyclonal antibody anti-14-3-3 protein zeta/delta (24-73 aa) is suitable for use in Western Blot, Immunohistochemistry, Immunoprecipitation, Immunofluorescence and ELISA research applications.
Applications	WB/IHC/IP/IF/ELISA
Host/Source	Rabbit
Reactivity	Human/Mouse/Rat

PRODUCT PROPERTIES

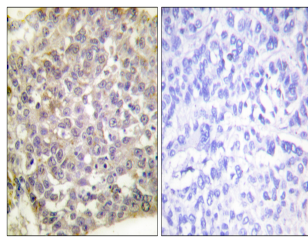
Clonality	Polyclonal
Clone ID	
Concentration	1 mg/mL
Conjugation	Unconjugated
Purification	The antibody was affinity-purified from rabbit antiserum by affinity-chromatography using epitope-specific immunogen.
Dilution Range	WB 1:500-1:2000 IHC 1:100-1:300 IP 2-5 ug mg/lysate IF 1:200-1:1000 ELISA 1:40000
Formulation	Liquid in PBS containing 50% Glycerol, 0.5% BSA and 0.02% Sodium Azide.
Isotype	IgG
Storage	Store at -20°C for up to 1 year from the date of receipt, and avoid repeat freeze-thaw cycles.
Instruction	

TARGET INFORMATION

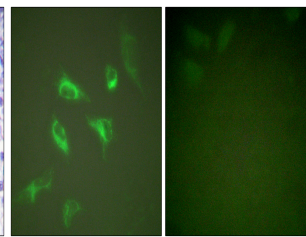
Gene ID	7534
Gene Symbol	YWHAZ
Uniprot ID	1433Z_HUMAN
Immunogen	The antiserum was produced against synthesized peptide derived from the human 14-3-3 zeta at the amino acid range 24-73
Immunogen Region	24-73 aa
Specificity	14-3-3 Zeta Polyclonal Antibody detects endogenous levels of 14-3-3 Zeta protein.
Immunogen Sequence	



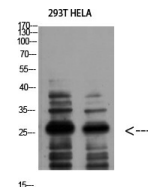
Western blot analysis of lysates from 293 cells, treated with Forskolin 40nM 30', using 14-3-3 zeta Antibody. The lane on the right is blocked with the synthesized peptide.



Immunohistochemistry analysis of paraffin-embedded human breast carcinoma tissue, using 14-3-3 zeta Antibody. The picture on the right is blocked with the synthesized peptide.



Immunofluorescence analysis of HeLa cells, using 14-3-3 zeta Antibody. The picture on the right is blocked with the synthesized peptide.



Western blot analysis of 293T HELA using 14-3-3 Zeta Polyclonal Antibody diluted at 1:1000. Secondary antibody was diluted at 1:20000.