

## Anti-14-3-3 Beta/Zeta antibody (151-200 aa) (STJ91368)

STJ91368

### GENERAL INFORMATION

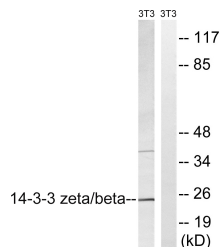
<b>Product Type</b>	Primary antibodies
<b>Short Description</b>	Rabbit polyclonal antibody anti-14-3-3 protein zeta/delta and 14-3-3 protein beta/alpha (151-200 aa) is suitable for use in Western Blot, Immunohistochemistry, Immunofluorescence and ELISA research applications.
<b>Applications</b>	WB/IHC/IF/ELISA
<b>Host/Source</b>	Rabbit
<b>Reactivity</b>	Human/Mouse/Rat

### PRODUCT PROPERTIES

<b>Clonality</b>	Polyclonal
<b>Clone ID</b>	
<b>Concentration</b>	1 mg/mL
<b>Conjugation</b>	Unconjugated
<b>Purification</b>	The antibody was affinity-purified from rabbit antiserum by affinity-chromatography using epitope-specific immunogen.
<b>Dilution</b>	WB 1:500-1:2000
<b>Range</b>	ELISA 1:20000 IF 1:50-200
<b>Formulation</b>	Liquid in PBS containing 50% Glycerol, 0.5% BSA and 0.02% Sodium Azide.
<b>Isotype</b>	IgG
<b>Storage Instruction</b>	Store at -20°C for up to 1 year from the date of receipt, and avoid repeat freeze-thaw cycles.

### TARGET INFORMATION

<b>Gene ID</b>	<a href="#">7534</a> <a href="#">7529</a>
<b>Gene Symbol</b>	<a href="#">YWHAZ</a> <a href="#">YWHAB</a>
<b>Uniprot ID</b>	<a href="#">1433Z_HUMAN</a> <a href="#">1433B_HUMAN</a>
<b>Immunogen</b>	The antiserum was produced against synthesized peptide derived from the human YWHAZ at the amino acid range 151-200
<b>Immunogen Region</b>	151-200 aa
<b>Specificity</b>	14-3-3 Beta/Zeta Polyclonal Antibody detects endogenous levels of 14-3-3 Beta/Zeta protein.
<b>Immunogen Sequence</b>	



Western blot analysis of lysates from NIH/3T3 cells, using 14-3-3 beta/zeta Antibody. The lane on the right is blocked with the synthesized peptide.