

Anti-Phospho-ERK 1/2-Thr202/Y204 antibody (STJ91357)

STJ91357

GENERAL INFORMATION

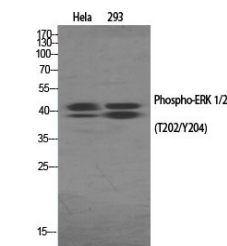
Product Type	Primary antibodies
Short Description	Rabbit polyclonal antibody anti-Phospho-Mitogen-activated protein kinase 3 and Mitogen-activated protein kinase 1-Thr202/Y204 is suitable for use in Immunofluorescence, Western Blot, Immunohistochemistry and ELISA research applications.
Applications	IF/WB/IHC/ELISA
Host/Source	Rabbit
Reactivity	Human/Mouse/Rat/Fish

PRODUCT PROPERTIES

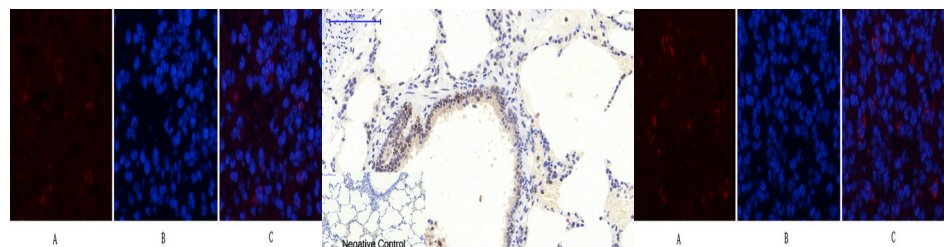
Clonality	Polyclonal
Clone ID	
Concentration	1 mg/mL
Conjugation	Unconjugated
Purification	The antibody was affinity-purified from rabbit antiserum by affinity-chromatography using epitope-specific immunogen.
Dilution	IF 1:50-200
Range	WB 1:500-1:2000 IHC 1:100-1:300 ELISA 1:20000
Formulation	Liquid in PBS containing 50% Glycerol, 0.5% BSA and 0.02% Sodium Azide.
Isotype	IgG
Storage	Store at -20°C for up to 1 year from the date of receipt, and avoid repeat freeze-thaw cycles.
Instruction	

TARGET INFORMATION

Gene ID	5595 5594
Gene Symbol	MAPK3 MAPK1
Uniprot ID	MK03_HUMAN MK01_HUMAN
Immunogen	Synthesized phospho-peptide around the phosphorylation site of human ERK 1/2 (phospho Thr202/Y204)
Immunogen Region	
Specificity	Phospho-ERK 1/2 (T202/Y204) Polyclonal Antibody detects endogenous levels of ERK 1/2 protein only when phosphorylated at T202 or Y204.
Immunogen Sequence	



Western blot analysis of various cells using Phospho-ERK 1/2 (T202/Y204) Polyclonal Antibody



Immunofluorescence analysis of mouse-spleen tissue. 1, ERK 1/2 (phospho Thr202/Y204) Polyclonal Antibody (red) was diluted at 1:200 (4Å°C, overnight). 2, Cy3 labeled Secondary antibody was diluted at 1:300 (room temperature, 50min). 3, Picture B: DAPI (blue) 10min. Picture A: Target. Picture B: DAPI. Picture C: merge of A+B

Immunohistochemical analysis of paraffin-embedded rat-lung tissue. 1, ERK 1/2 (phospho Thr202/Y204) Polyclonal Antibody was diluted at 1:200 (4Å°C, overnight). 2, Sodium citrate pH 6.0 was used for antibody retrieval (>98Å°C, 20min). 3, Secondary antibody was diluted at 1:200 (room temperature, 30min). Negative control was used by secondary antibody only.

Immunofluorescence analysis of mouse-spleen tissue. 1, ERK 1/2 (phospho Thr202/Y204) Polyclonal Antibody (red) was diluted at 1:200 (4Å°C, overnight). 2, Cy3 labeled Secondary antibody was diluted at 1:300 (room temperature, 50min). 3, Picture B: DAPI (blue) 10min. Picture A: Target. Picture B: DAPI. Picture C: merge of A+B

This product is suitable for in-vitro studies under the RESEARCH USE ONLY [RUO] licence. This product must not be used as for diagnostic or other medical purposes.
St John's Laboratory Ltd, Knowledge Dock Business Centre, University Way, London, E16 2RD | Tel: 0208 223 3081