

Anti-Phospho-S1PR1-Thr236 antibody (206-255 aa) (STJ91353)

STJ91353

GENERAL INFORMATION

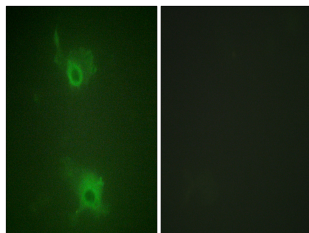
Product Type	Primary antibodies
Short Description	Rabbit polyclonal antibody anti-Phospho-Sphingosine 1-phosphate receptor 1-Thr236 (206-255 aa) is suitable for use in Western Blot, Immunofluorescence and ELISA research applications.
Applications	WB/IF/ELISA
Host/Source	Rabbit
Reactivity	Human/Mouse/Rat

PRODUCT PROPERTIES

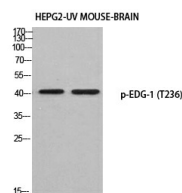
Clonality	Polyclonal
Clone ID	
Concentration	1 mg/mL
Conjugation	Unconjugated
Purification	The antibody was affinity-purified from rabbit antiserum by affinity-chromatography using epitope-specific immunogen.
Dilution Range	WB 1:500-2000 IF 1:200-1:1000 ELISA 1:10000
Formulation	Liquid in PBS containing 50% Glycerol, 0.5% BSA and 0.02% Sodium Azide.
Isotype	IgG
Storage Instruction	Store at -20°C for up to 1 year from the date of receipt, and avoid repeat freeze-thaw cycles.

TARGET INFORMATION

Gene ID	1901
Gene Symbol	S1PR1
Uniprot ID	S1PR1_HUMAN
Immunogen	The antiserum was produced against synthesized peptide derived from the human S1P Receptor EDG1 around the phosphorylation site of Thr236 at the amino acid range 206-255
Immunogen Region	206-255 aa
Specificity	Phospho-EDG-1 (T236) Polyclonal Antibody detects endogenous levels of EDG-1 protein only when phosphorylated at T236.
Immunogen Sequence	



Immunofluorescence analysis of COS7 cells, using S1P Receptor EDG1 (Phospho-Thr236) Antibody. The picture on the right is blocked with the phospho peptide.



Western blot analysis of HEPG2-UV mouse brain using p-EDG-1 (T236) antibody. Antibody was diluted at 1:500