

## Anti-Phospho-MDM2-Ser186/S188 antibody (151-200 aa) (STJ91352)

STJ91352

### GENERAL INFORMATION

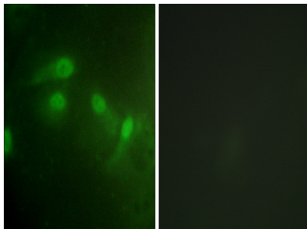
<b>Product Type</b>	Primary antibodies
<b>Short Description</b>	Rabbit polyclonal antibody anti-Phospho-E3 ubiquitin-protein ligase Mdm2-Ser186/S188 (151-200 aa) is suitable for use in Immunofluorescence, Western Blot and ELISA research applications.
<b>Applications</b>	IF/WB/ELISA
<b>Host/Source</b>	Rabbit
<b>Reactivity</b>	Human/Rat/Mouse

### PRODUCT PROPERTIES

<b>Clonality</b>	Polyclonal
<b>Clone ID</b>	
<b>Concentration</b>	1 mg/mL
<b>Conjugation</b>	Unconjugated
<b>Purification</b>	The antibody was affinity-purified from rabbit antiserum by affinity-chromatography using epitope-specific immunogen.
<b>Dilution Range</b>	WB 1:500-2000 IF 1:200-1:1000 ELISA 1:20000
<b>Formulation</b>	Liquid in PBS containing 50% Glycerol, 0.5% BSA and 0.02% Sodium Azide.
<b>Isotype</b>	IgG
<b>Storage Instruction</b>	Store at -20°C for up to 1 year from the date of receipt, and avoid repeat freeze-thaw cycles.

### TARGET INFORMATION

<b>Gene ID</b>	4193
<b>Gene Symbol</b>	MDM2
<b>Uniprot ID</b>	MDM2_HUMAN
<b>Immunogen</b>	The antiserum was produced against synthesized peptide derived from the human MDM2 around the phosphorylation site of Ser186 and Ser188 at the amino acid range 151-200
<b>Immunogen Region</b>	151-200 aa
<b>Specificity</b>	Phospho-MDM2 (S186/S188) Polyclonal Antibody detects endogenous levels of MDM2 protein only when phosphorylated at S186/S188.
<b>Immunogen Sequence</b>	



Immunofluorescence analysis of HeLa cells, using MDM2 (Phospho-Ser186+Ser188) Antibody. The picture on the right is blocked with the phospho peptide.