

Anti-Phospho-HRH1-Ser398 antibody (364-413 aa) (STJ91347)

STJ91347

GENERAL INFORMATION

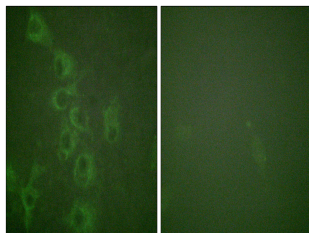
Product Type	Primary antibodies
Short Description	Rabbit polyclonal antibody anti-Phospho-Histamine H1 receptor-Ser398 (364-413 aa) is suitable for use in Immunofluorescence and ELISA research applications.
Applications	IF/ELISA
Host/Source	Rabbit
Reactivity	Human/Mouse/Rat

PRODUCT PROPERTIES

Clonality	Polyclonal
Clone ID	
Concentration	1 mg/mL
Conjugation	Unconjugated
Purification	The antibody was affinity-purified from rabbit antiserum by affinity-chromatography using epitope-specific immunogen.
Dilution Range	IF 1:200-1:1000 ELISA 1:10000
Formulation	Liquid in PBS containing 50% Glycerol, 0.5% BSA and 0.02% Sodium Azide.
Isotype	IgG
Storage	Store at -20°C for up to 1 year from the date of receipt, and avoid repeat freeze-thaw cycles.
Instruction	

TARGET INFORMATION

Gene ID	3269
Gene Symbol	HRH1
Uniprot ID	HRH1_HUMAN
Immunogen	The antiserum was produced against synthesized peptide derived from the human Histamine H1 Receptor around the phosphorylation site of Ser398 at the amino acid range 364-413
Immunogen Region	364-413 aa
Specificity	Phospho-Histamine H1 Receptor (S398) Polyclonal Antibody detects endogenous levels of Histamine H1 Receptor protein only when phosphorylated at S398.
Immunogen Sequence	



Immunofluorescence analysis of HUVEC cells, using Histamine H1 Receptor (Phospho-Ser398) Antibody. The picture on the right is blocked with the phospho peptide.