

Anti-Phospho-ESR1-Ser305 antibody (276-325 aa) (STJ91336)

STJ91336

GENERAL INFORMATION

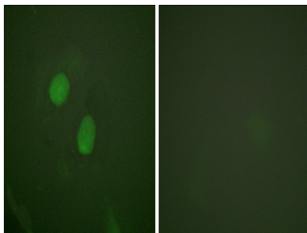
Product Type	Primary antibodies
Short Description	Rabbit polyclonal antibody anti-Phospho-Estrogen receptor-Ser305 (276-325 aa) is suitable for use in Immunofluorescence and ELISA research applications.
Applications	IF/ELISA
Host/Source	Rabbit
Reactivity	Human/Rat/Mouse

PRODUCT PROPERTIES

Clonality	Polyclonal
Clone ID	
Concentration	1 mg/mL
Conjugation	Unconjugated
Purification	The antibody was affinity-purified from rabbit antiserum by affinity-chromatography using epitope-specific immunogen.
Dilution Range	IF 1:200-1:1000 ELISA 1:20000
Formulation	Liquid in PBS containing 50% Glycerol, 0.5% BSA and 0.02% Sodium Azide.
Isotype	IgG
Storage	Store at -20°C for up to 1 year from the date of receipt, and avoid repeat freeze-thaw cycles.
Instruction	

TARGET INFORMATION

Gene ID	2099
Gene Symbol	ESR1
Uniprot ID	ESR1_HUMAN
Immunogen	The antiserum was produced against synthesized peptide derived from the human Estrogen Receptor-alpha around the phosphorylation site of Ser305 at the amino acid range 276-325
Immunogen Region	276-325 aa
Specificity	Phospho-ER Alpha (S305) Polyclonal Antibody detects endogenous levels of ER Alpha protein only when phosphorylated at S305.
Immunogen Sequence	



Immunofluorescence analysis of HeLa cells treated with EGF (200nM, 5'), using Estrogen Receptor-alpha (Phospho-Ser305) Antibody. The picture on the right is blocked with the phospho peptide.