

## Anti-Phospho-CCNE2-Thr392 antibody (355-404 aa) (STJ91333)

STJ91333

### GENERAL INFORMATION

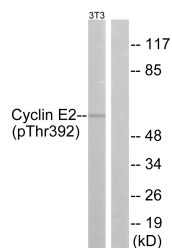
<b>Product Type</b>	Primary antibodies
<b>Short Description</b>	Rabbit polyclonal antibody anti-Phospho-G1/S-specific cyclin-E2-Thr392 (355-404 aa) is suitable for use in Immunofluorescence and ELISA research applications.
<b>Applications</b>	IF/ELISA
<b>Host/Source</b>	Rabbit
<b>Reactivity</b>	Human/Mouse

### PRODUCT PROPERTIES

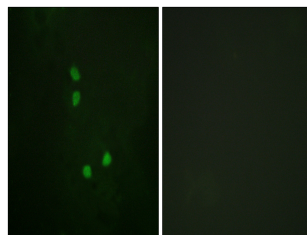
<b>Clonality</b>	Polyclonal
<b>Clone ID</b>	
<b>Concentration</b>	1 mg/mL
<b>Conjugation</b>	Unconjugated
<b>Purification</b>	The antibody was affinity-purified from rabbit antiserum by affinity-chromatography using epitope-specific immunogen.
<b>Dilution Range</b>	IF 1:200-1:1000 ELISA 1:10000
<b>Formulation</b>	Liquid in PBS containing 50% Glycerol, 0.5% BSA and 0.02% Sodium Azide.
<b>Isotype</b>	IgG
<b>Storage</b>	Store at -20°C for up to 1 year from the date of receipt, and avoid repeat freeze-thaw cycles.
<b>Instruction</b>	

### TARGET INFORMATION

<b>Gene ID</b>	9134
<b>Gene Symbol</b>	CCNE2
<b>Uniprot ID</b>	CCNE2_HUMAN
<b>Immunogen</b>	The antiserum was produced against synthesized peptide derived from the human Cyclin E2 around the phosphorylation site of Thr392 at the amino acid range 355-404
<b>Immunogen Region</b>	355-404 aa
<b>Specificity</b>	Phospho-Cyclin E2 (T392) Polyclonal Antibody detects endogenous levels of Cyclin E2 protein only when phosphorylated at T392.
<b>Immunogen Sequence</b>	



Western blot analysis of Cyclin E2 (Phospho-Thr392) Antibody. The lane on the right is blocked with the Cyclin E2 (Phospho-Thr392) peptide.



Immunofluorescence analysis of NIH/3T3 cells, using Cyclin E2 (Phospho-Thr392) Antibody. The picture on the right is blocked with the phospho peptide.