

Anti-Phospho-H3-3A/H3-3B-Ser31 antibody (16-65 aa) (STJ91330)

STJ91330

GENERAL INFORMATION

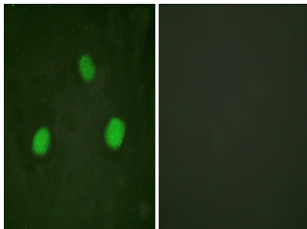
Product Type	Primary antibodies
Short Description	Rabbit polyclonal antibody anti-Phospho-Histone H3.3-Ser31 (16-65 aa) is suitable for use in Immunohistochemistry, Immunofluorescence and ELISA research applications.
Applications	IHC/IF/ELISA
Host/Source	Rabbit
Reactivity	Human/Mouse/Rat

PRODUCT PROPERTIES

Clonality	Polyclonal
Clone ID	
Concentration	1 mg/mL
Conjugation	Unconjugated
Purification	The antibody was affinity-purified from rabbit antiserum by affinity-chromatography using epitope-specific immunogen.
Dilution Range	IHC 1:100-1:300 IF 1:200-1:1000 ELISA 1:20000
Formulation	Liquid in PBS containing 50% Glycerol, 0.5% BSA and 0.02% Sodium Azide.
Isotype	IgG
Storage Instruction	Store at -20°C for up to 1 year from the date of receipt, and avoid repeat freeze-thaw cycles.

TARGET INFORMATION

Gene ID	3020/3021
Gene Symbol	H3-3A.H3-3B
Uniprot ID	H33_HUMAN
Immunogen	The antiserum was produced against synthesized peptide derived from the human Histone H3.3 around the phosphorylation site of Ser31 at the amino acid range 16-65
Immunogen Region	16-65 aa
Specificity	Phospho-Histone H3.3 (S31) Polyclonal Antibody detects endogenous levels of Histone H3.3 protein only when phosphorylated at S31.
Immunogen Sequence	



Immunofluorescence analysis of HeLa cells, using Histone H3.3 (Phospho-Ser31) Antibody. The picture on the right is blocked with the phospho peptide.