

Anti-Phospho-PLN-Ser16/T17 antibody (1-50 aa) (STJ91324)

STJ91324

GENERAL INFORMATION

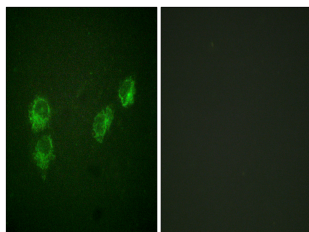
Product Type	Primary antibodies
Short Description	Rabbit polyclonal antibody anti-Phospho-Cardiac phospholamban-Ser16/T17 (1-50 aa) is suitable for use in Western Blot and Immunohistochemistry research applications.
Applications	WB/IHC
Host/Source	Rabbit
Reactivity	Human/Mouse/Rat

PRODUCT PROPERTIES

Clonality	Polyclonal
Clone ID	
Concentration	1 mg/mL
Conjugation	Unconjugated
Purification	The antibody was affinity-purified from rabbit antiserum by affinity-chromatography using epitope-specific immunogen.
Dilution Range	WB 1:500-2000 IHC-P 1:50-300
Formulation	Liquid in PBS containing 50% Glycerol, 0.5% BSA and 0.02% Sodium Azide.
Isotype	IgG
Storage	Store at -20°C for up to 1 year from the date of receipt, and avoid repeat freeze-thaw cycles.
Instruction	

TARGET INFORMATION

Gene ID	5350
Gene Symbol	PLN
Uniprot ID	PPLA_HUMAN
Immunogen	The antiserum was produced against synthesized peptide derived from the human PLN around the phosphorylation site of Ser16 and Thr17 at the amino acid range 1-50
Immunogen Region	1-50 aa
Specificity	Phospho-PLB (S16/T17) Polyclonal Antibody detects endogenous levels of PLB protein only when phosphorylated at S16/T17.
Immunogen Sequence	



Immunofluorescence analysis of HUVEC cells, using PLB (Phospho-Ser16-Thr17) Antibody. The picture on the right is blocked with the phospho peptide.

This product is suitable for in-vitro studies under the RESEARCH USE ONLY [RUO] licence. This product must not be used as for diagnostic or other medical purposes.
St John's Laboratory Ltd, Knowledge Dock Business Centre, University Way, London, E16 2RD | Tel: 0208 223 3081