

Anti-Phospho-TGFR3-Thr842 antibody (801-850 aa) (STJ91321)

STJ91321

GENERAL INFORMATION

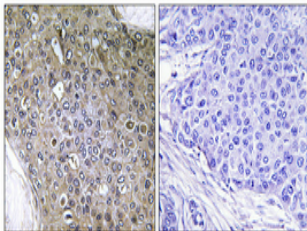
Product Type	Primary antibodies
Short Description	Rabbit polyclonal antibody anti-Phospho-Transforming growth factor beta receptor type 3-Thr842 (801-850 aa) is suitable for use in Immunohistochemistry, Immunofluorescence and ELISA research applications.
Applications	IHC/IF/ELISA
Host/Source	Rabbit
Reactivity	Human/Mouse/Rat

PRODUCT PROPERTIES

Clonality	Polyclonal
Clone ID	
Concentration	1 mg/mL
Conjugation	Unconjugated
Purification	The antibody was affinity-purified from rabbit antiserum by affinity-chromatography using epitope-specific immunogen.
Dilution	IHC 1:100-1:300
Range	IF 1:200-1:1000 ELISA 1:5000
Formulation	Liquid in PBS containing 50% Glycerol, 0.5% BSA and 0.02% Sodium Azide.
Isotype	IgG
Storage	Store at -20°C for up to 1 year from the date of receipt, and avoid repeat freeze-thaw cycles.
Instruction	

TARGET INFORMATION

Gene ID	7049
Gene Symbol	TGFR3
Uniprot ID	TGFR3_HUMAN
Immunogen	The antiserum was produced against synthesized peptide derived from the human TGF beta Receptor III around the phosphorylation site of Thr842 at the amino acid range 801-850
Immunogen Region	801-850 aa
Specificity	Phospho-TGF Beta RIII (T842) Polyclonal Antibody detects endogenous levels of TGF Beta RIII protein only when phosphorylated at T842.
Immunogen Sequence	



Immunohistochemical analysis of paraffin-embedded Human breast cancer. Antibody was diluted at 1:100 (4A°C overnight). High-pressure and temperature Tris-EDTA, pH8.0 was used for antigen retrieval. Negative control (right) obtained from antibody was pre-absorbed by immunogen peptide.