

Anti-Phospho-KCNJ1-Ser44 antibody (11-60 aa) (STJ91320)

STJ91320

GENERAL INFORMATION

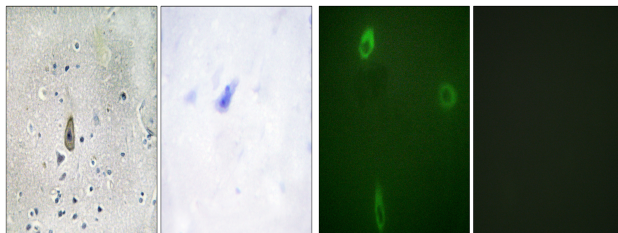
Product Type	Primary antibodies
Short Description	Rabbit polyclonal antibody anti-Phospho-ATP-sensitive inward rectifier potassium channel 1 channel Kir1.1-Ser44 (11-60 aa) is suitable for use in Immunohistochemistry, Immunofluorescence and ELISA research applications.
Applications	IHC/IF/ELISA
Host/Source	Rabbit
Reactivity	Human/Mouse/Rat

PRODUCT PROPERTIES

Clonality	Polyclonal
Clone ID	
Concentration	1 mg/mL
Conjugation	Unconjugated
Purification	The antibody was affinity-purified from rabbit antiserum by affinity-chromatography using epitope-specific immunogen.
Dilution	IHC 1:100-1:300
Range	IF 1:200-1:1000 ELISA 1:5000
Formulation	Liquid in PBS containing 50% Glycerol, 0.5% BSA and 0.02% Sodium Azide.
Isotype	IgG
Storage Instruction	Store at -20°C for up to 1 year from the date of receipt, and avoid repeat freeze-thaw cycles.

TARGET INFORMATION

Gene ID	3758
Gene Symbol	KCNJ1
Uniprot ID	KCNJ1_HUMAN
Immunogen	The antiserum was produced against synthesized peptide derived from the human ROMK/Kir1.1 around the phosphorylation site of Ser44/25 at the amino acid range 11-60
Immunogen Region	11-60 aa
Specificity	Phospho-ROM-K (S44) Polyclonal Antibody detects endogenous levels of ROM-K protein only when phosphorylated at S44.
Immunogen Sequence	



Immunohistochemistry analysis of paraffin-embedded human brain, using ROMK/Kir1.1 (Phospho-Ser44/25) Antibody. The picture on the right is blocked with the phospho peptide.

Immunofluorescence analysis of A549 cells, using ROMK/Kir1.1 (Phospho-Ser44/25) Antibody. The picture on the right is blocked with the phospho peptide.

This product is suitable for in-vitro studies under the RESEARCH USE ONLY [RUO] licence. This product must not be used as for diagnostic or other medical purposes.
St John's Laboratory Ltd, Knowledge Dock Business Centre, University Way, London, E16 2RD | Tel: 0208 223 3081