

Anti-Phospho-ITGA4-Ser1027 antibody (983-1032 aa) (STJ91315)

STJ91315

GENERAL INFORMATION

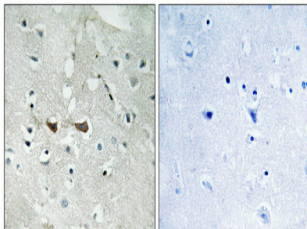
Product Type	Primary antibodies
Short Description	Rabbit polyclonal antibody anti-Phospho-Integrin alpha-4-Ser1027 (983-1032 aa) is suitable for use in Immunohistochemistry, Immunofluorescence and ELISA research applications.
Applications	IHC/IF/ELISA
Host/Source	Rabbit
Reactivity	Human/Mouse

PRODUCT PROPERTIES

Clonality	Polyclonal
Clone ID	
Concentration	1 mg/mL
Conjugation	Unconjugated
Purification	The antibody was affinity-purified from rabbit antiserum by affinity-chromatography using epitope-specific immunogen.
Dilution Range	IHC 1:100-1:300 IF 1:200-1:1000 ELISA 1:5000
Formulation	Liquid in PBS containing 50% Glycerol, 0.5% BSA and 0.02% Sodium Azide.
Isotype	IgG
Storage Instruction	Store at -20°C for up to 1 year from the date of receipt, and avoid repeat freeze-thaw cycles.

TARGET INFORMATION

Gene ID	3676
Gene Symbol	ITGA4
Uniprot ID	ITA4_HUMAN
Immunogen	The antiserum was produced against synthesized peptide derived from the human Integrin alpha4 around the phosphorylation site of Ser1027 at the amino acid range 983-1032
Immunogen Region	983-1032 aa
Specificity	Phospho-Integrin Alpha 4 (S1027) Polyclonal Antibody detects endogenous levels of Integrin Alpha 4 protein only when phosphorylated at S1027.
Immunogen Sequence	



Immunohistochemical analysis of paraffin-embedded Human brain. Antibody was diluted at 1:100 (4A°C overnight). High-pressure and temperature Tris-EDTA, pH8.0 was used for antigen retrieval. Negative control (right) obtained from antibody was pre-absorbed by immunogen peptide.