

Anti-Phospho-SYN1-Ser605 antibody (576-625 aa) (STJ91309)

STJ91309

GENERAL INFORMATION

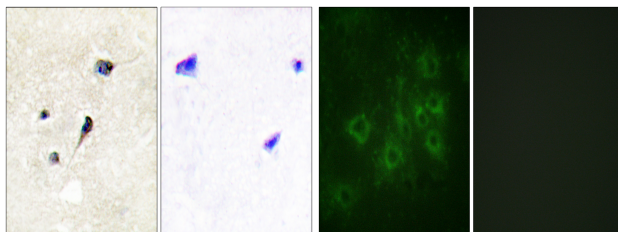
Product Type	Primary antibodies
Short Description	Rabbit polyclonal antibody anti-Phospho-Synapsin-1-Ser605 (576-625 aa) is suitable for use in Immunohistochemistry, Immunofluorescence and ELISA research applications.
Applications	IHC/IF/ELISA
Host/Source	Rabbit
Reactivity	Human/Mouse/Rat

PRODUCT PROPERTIES

Clonality	Polyclonal
Clone ID	
Concentration	1 mg/mL
Conjugation	Unconjugated
Purification	The antibody was affinity-purified from rabbit antiserum by affinity-chromatography using epitope-specific immunogen.
Dilution Range	IHC 1:100-1:300 IF 1:200-1:1000 ELISA 1:20000
Formulation	Liquid in PBS containing 50% Glycerol, 0.5% BSA and 0.02% Sodium Azide.
Isotype	IgG
Storage Instruction	Store at -20°C for up to 1 year from the date of receipt, and avoid repeat freeze-thaw cycles.

TARGET INFORMATION

Gene ID	6853
Gene Symbol	SYN1
Uniprot ID	SYN1_HUMAN
Immunogen	The antiserum was produced against synthesized peptide derived from the human Synapsin1 around the phosphorylation site of Ser605 at the amino acid range 576-625
Immunogen Region	576-625 aa
Specificity	Phospho-Synapsin I (S605) Polyclonal Antibody detects endogenous levels of Synapsin I protein only when phosphorylated at S605.
Immunogen Sequence	



Immunohistochemistry analysis of paraffin-embedded human brain, using Synapsin1 (Phospho-Ser605) Antibody. The picture on the right is blocked with the phospho peptide.

Immunofluorescence analysis of COS7 cells, using Synapsin1 (Phospho-Ser605) Antibody. The picture on the right is blocked with the phospho peptide.

This product is suitable for in-vitro studies under the RESEARCH USE ONLY [RUO] licence. This product must not be used as for diagnostic or other medical purposes.
St John's Laboratory Ltd, Knowledge Dock Business Centre, University Way, London, E16 2RD | Tel: 0208 223 3081