

Anti-Phospho-PTK2-Ser910 antibody (876-925 aa) (STJ91306)

STJ91306

GENERAL INFORMATION

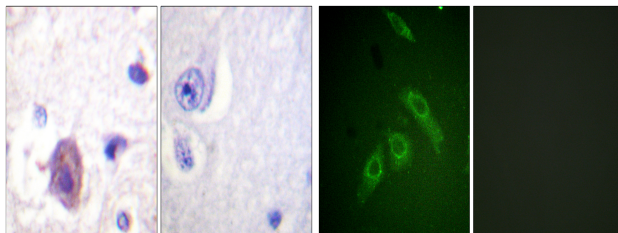
Product Type	Primary antibodies
Short Description	Rabbit polyclonal antibody anti-Phospho-Focal adhesion kinase 1-Ser910 (876-925 aa) is suitable for use in Immunohistochemistry, Immunofluorescence and ELISA research applications.
Applications	IHC/IF/ELISA
Host/Source	Rabbit
Reactivity	Human/Mouse/Rat

PRODUCT PROPERTIES

Clonality	Polyclonal
Clone ID	
Concentration	1 mg/mL
Conjugation	Unconjugated
Purification	The antibody was affinity-purified from rabbit antiserum by affinity-chromatography using epitope-specific immunogen.
Dilution Range	IHC 1:100-1:300 IF 1:200-1:1000 ELISA 1:5000
Formulation	Liquid in PBS containing 50% Glycerol, 0.5% BSA and 0.02% Sodium Azide.
Isotype	IgG
Storage Instruction	Store at -20°C for up to 1 year from the date of receipt, and avoid repeat freeze-thaw cycles.

TARGET INFORMATION

Gene ID	5747
Gene Symbol	PTK2
Uniprot ID	FAK1_HUMAN
Immunogen	The antiserum was produced against synthesized peptide derived from the human FAK around the phosphorylation site of Ser910 at the amino acid range 876-925
Immunogen Region	876-925 aa
Specificity	Phospho-FAK (S910) Polyclonal Antibody detects endogenous levels of FAK protein only when phosphorylated at S910.
Immunogen Sequence	



Immunohistochemistry analysis of paraffin-embedded human brain, using FAK (Phospho-Ser910) Antibody. The picture on the right is blocked with the phospho peptide.

Immunofluorescence analysis of HepG2 cells, using FAK (Phospho-Ser910) Antibody. The picture on the right is blocked with the phospho peptide.