

Anti-Phospho-PRKDC-Thr2647 antibody (2613-2662 aa) (STJ91305)

STJ91305

GENERAL INFORMATION

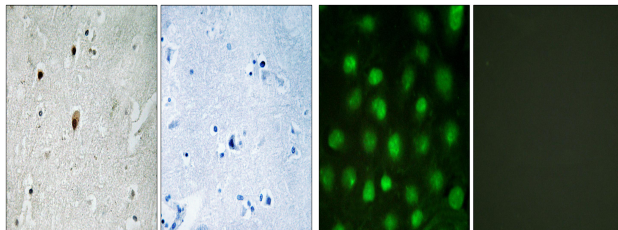
Product Type	Primary antibodies
Short Description	Rabbit polyclonal antibody anti-Phospho-DNA-dependent protein kinase catalytic subunit-Thr2647 (2613-2662 aa) is suitable for use in Western Blot, Immunohistochemistry, Immunofluorescence and ELISA research applications.
Applications	WB/IHC/IF/ELISA
Host/Source	Rabbit
Reactivity	Human/Rat/Mouse

PRODUCT PROPERTIES

Clonality	Polyclonal
Clone ID	
Concentration	1 mg/mL
Conjugation	Unconjugated
Purification	The antibody was affinity-purified from rabbit antiserum by affinity-chromatography using epitope-specific immunogen.
Dilution	WB 1:500-2000
Range	IHC 1:100-1:300 IF 1:200-1:1000 ELISA 1:10000
Formulation	Liquid in PBS containing 50% Glycerol, 0.5% BSA and 0.02% Sodium Azide.
Isotype	IgG
Storage Instruction	Store at -20°C for up to 1 year from the date of receipt, and avoid repeat freeze-thaw cycles.

TARGET INFORMATION

Gene ID	5591
Gene Symbol	PRKDC
Uniprot ID	PRKDC_HUMAN
Immunogen	The antiserum was produced against synthesized peptide derived from the human DNA-PK around the phosphorylation site of Thr2647 at the amino acid range 2613-2662
Immunogen Region	2613-2662 aa
Specificity	Phospho-DNA-PKCS (T2647) Polyclonal Antibody detects endogenous levels of DNA-PKCS protein only when phosphorylated at T2647.
Immunogen Sequence	



Immunohistochemistry analysis of paraffin-embedded human brain using DNA-PK (Phospho-Thr2647) Antibody. The picture on the right is blocked with the phospho peptide.

Immunofluorescence analysis of HUVEC cells treated with serum 20% 30', using DNA-PK (Phospho-Thr2647) Antibody. The picture on the right is blocked with the phospho peptide.