

Anti-Phospho-DDX5-Tyr593 antibody (565-614 aa) (STJ91304)

STJ91304

GENERAL INFORMATION

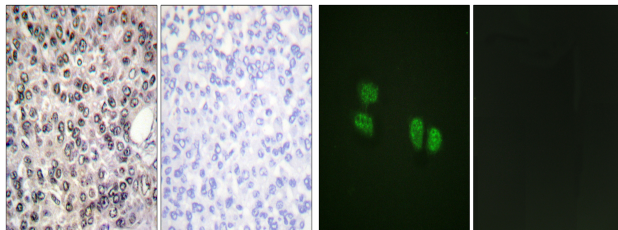
Product Type	Primary antibodies
Short Description	Rabbit polyclonal antibody anti-Phospho-Probable ATP-dependent RNA helicase DDX5-Tyr593 (565-614 aa) is suitable for use in Western Blot, Immunohistochemistry, Immunofluorescence and ELISA research applications.
Applications	WB/IHC/IF/ELISA
Host/Source	Rabbit
Reactivity	Human/Mouse/Rat

PRODUCT PROPERTIES

Clonality	Polyclonal
Clone ID	
Concentration	1 mg/mL
Conjugation	Unconjugated
Purification	The antibody was affinity-purified from rabbit antiserum by affinity-chromatography using epitope-specific immunogen.
Dilution	WB 1:500-1:2000
Range	IHC 1:100-1:300 IF 1:200-1:1000 ELISA 1:10000
Formulation	Liquid in PBS containing 50% Glycerol, 0.5% BSA and 0.02% Sodium Azide.
Isotype	IgG
Storage	Store at -20°C for up to 1 year from the date of receipt, and avoid repeat freeze-thaw cycles.
Instruction	

TARGET INFORMATION

Gene ID	1655
Gene Symbol	DDX5
Uniprot ID	DDX5_HUMAN
Immunogen	The antiserum was produced against synthesized peptide derived from the human DDX5/DEAD-box Protein 5 around the phosphorylation site of Tyr593 at the amino acid range 565-614
Immunogen Region	565-614 aa
Specificity	Phospho-p68 RNA Helicase (Y593) Polyclonal Antibody detects endogenous levels of p68 RNA Helicase protein only when phosphorylated at Y593.
Immunogen Sequence	



Immunohistochemistry analysis of paraffin-embedded human breast carcinoma, using DDX5/DEAD-box Protein 5 (Phospho-Tyr593) Antibody. The picture on the right is blocked with the phospho peptide.

Immunofluorescence analysis of HeLa cells, using DDX5/DEAD-box Protein 5 (Phospho-Tyr593) Antibody. The picture on the right is blocked with the phospho peptide.